

12 Axebridge Circuit, Epping, Vic 3076

House For Sale

Thursday, 18 April 2024

12 Axebridge Circuit, Epping, Vic 3076

Bedrooms: 4

Bathrooms: 2

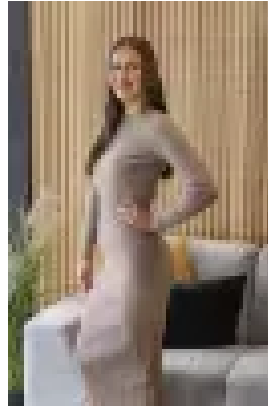
Parkings: 2

Area: 560 m2

Type: House



Jay Moxon
0391111707



Imogen Hammond
0391111707

\$675,000 - \$725,000 AUCTION THIS SATURDAY AT 11AM

Discover the epitome of luxurious family living in this meticulously kept home, perfectly situated within proximity to Pacific Epping Shopping Centre, Epping North Shopping Centre, Epping Train Station and a further array of esteemed schools, parks and amenities. This residence embodies convenience and comfort, making it an irresistible choice for your family's forever home. Step inside to find four very good-sized bedrooms, with a walk-in robe and ensuite to master, large lounge upon entry, a gorgeous kitchen that boasts an island bench, quality appliances, ample cabinetry and adjacent meals and family areas. A large rumpus to the rear adds to the appeal and versatility of the layout. Journey outside to find a decked entertainment area which is accompanied by lush green grass and carefully landscaped gardens. Whether it's outdoor play, gardening, or simply unwinding in the open air, this space offers endless possibilities for your family's enjoyment. Extra features include the comforts of ducted heating and cooling via split system, NBN, a very spacious laundry, extensive storage options, a double garage with internal access plus further off-street parking. Don't miss out on this incredible opportunity to own a home that effortlessly combines location and livability.