

1/1 Fitzgerald Crescent, Strathfield, NSW 2135



Townhouse For Sale

Friday, 14 June 2024

1/1 Fitzgerald Crescent, Strathfield, NSW 2135

Bedrooms: 2

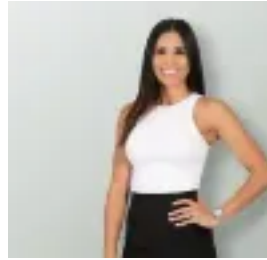
Bathrooms: 1

Parkings: 2

Type: Townhouse



Simon Furnari
0283226900



Nathalie Estrella
0283226900

Auction | Contact Agent

Nestled within a boutique and well-maintained complex, this full brick townhouse has been stylishly appointed to ensure the finest in low-maintenance living. Featuring a streamlined design with excellent cross-flow ventilation, the bright interiors boast an open-plan lounge/dining area with seamless access to a private, all-season courtyard. Residents benefit from a communal swimming pool and enjoy an exceptional location, just steps away from the vibrant dining and shopping options along Liverpool Road. - Elegant interiors reveal dual outdoor flow to a front balcony and a private courtyard- The living and dining space reveal an interconnected layout with timber floorboards- Pergola-covered courtyard enhanced with synthetic turf and an in-built timber seat- The backyard creates a private and low-maintenance space to entertain and gather- Well-maintained kitchen overlooks the backyard and features steel gas appliances- Two queen-sized bedrooms each appointed with mirrored built-ins and ceiling fans- Stylish bathroom reveals floor-to-ceiling tiles, a soaking tub and a separate shower- Air-conditioning, ceiling fans, alarm system, readymade first home or prized investment- Tandem lock-up garage on title, established complex is set within manicured hedging- 850m to Strathfield Park/Wallis Reserve, schools and 2.1km from Chullora Marketplace Strata Levies: \$860 p/q approx. Council Rates: \$400 p/q approx. Water rates: \$180 + usage p/q approx. School catchment (Primary and Secondary): St Anne's Catholic Primary School Trinity Grammar School St Patrick's College Strathfield Santa Sabina College Meriden School