

1/1 Jane Street, Berwick, Vic 3806



Sold Unit

Thursday, 16 November 2023

1/1 Jane Street, Berwick, Vic 3806

Bedrooms: 2

Bathrooms: 1

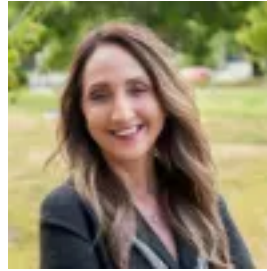
Parkings: 1

Area: 176 m2

Type: Unit



Debbie Brettner
0390887488



Julie Petty
0390887488

\$595,000

Welcome to 1/1 Jane Street - a beautifully maintained single level home that effortlessly combines modern convenience with the ease of everyday living. One of only two on the block it offers endless appeal to first homebuyers, investors, and downsizers alike. Filled with natural light, this two-bedroom, one-bathroom home welcomes you with a generously sized living space that sits adjacent to a recently renovated kitchen/meals and laundry - both adorned with contemporary finishes and offering the simplicity of low-maintenance living. Timber-look flooring adds warmth and character to the kitchen and dining areas, whilst neatly maintained carpet affords further comfort throughout the living and bedroom zones. Split system heating and cooling ensures comfort year-round. The generous master suite offers a WIR and walkthrough access to the shared bathroom with separate shower, bath & vanity. The home's second bedroom boasts a built-in robe for added storage convenience and is further complemented by quality blinds and downlights that add a modern touch. Outside you'll discover a private courtyard providing the perfect setting for outdoor enjoyment in the privacy of your own home. The single-car remote access garage has been thoughtfully converted into a fully plumbed salon or home office space, offering convenience and flexibility for lifestyle or business endeavours. With no active body corporate (insurance only) and situated nearby Berwick Train Station, bustling High Street boutiques, Berwick Lodge Primary School, and Monash Freeway access, and Casey Health Precinct this home has essential local amenities within close reach. Contact us today to uncover the undeniable charm of 1/1 Jane Street, Berwick. Photo I.D. is required at all open inspections.