

# 1/1 Sandown Close, Casula, NSW 2170



## Terrace For Sale

Thursday, 30 May 2024

1/1 Sandown Close, Casula, NSW 2170

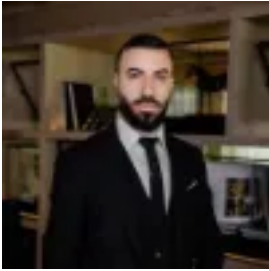
**Bedrooms: 4**

**Bathrooms: 2**

**Parkings: 1**

**Area: 180 m2**

**Type: Terrace**



(Sam) Salam Saadoon Majeed  
0287983557

## 910-930k

Global RE is excited to bring to market this one of kind project to the area. Thanks goes to Morfisis Design to bring the best of luxury quality and practical designed homes to the region! this wonderful terraces crafted in super wide streets right next to Casula Mall and in walking distance to all amenities including Casula High School. The luxury quality is calling potential buyers to enjoy this home in every single aspect. this project includes 4 terraces, 3 of which SOLD, they are strata titled with no strata management fees (New owners elected to do self management) Unit 1 is corner design features massive ground level open plan with all bedrooms on first level the build features:- skylights all around the property- gas cooking and hot water system- ducted aircon- tiled on ground level while floating board on first level- each unit has its own utilities meters approximate land around 180m<sup>2</sup> for each unit book your inspection today and dont miss out! 2 already sold! Properties are ready to settle