

1/11 Pettit Close, Berwick, Vic 3806



Townhouse For Sale

Friday, 31 May 2024

1/11 Pettit Close, Berwick, Vic 3806

Bedrooms: 4

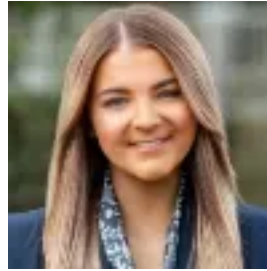
Bathrooms: 2

Parkings: 2

Type: Townhouse



Chris Watson
0398798827



Olivia Mackie
0398798827

Auction unless sold prior \$680,000 - \$750,000

Auction unless sold prior. THE PROPERTY 230m² under roof Spaciously designed and perfectly positioned in a tranquil cul-de-sac, this modern four-bedroom townhouse is ideal for first home buyers, families and investors looking to secure their future. Beautifully presented inside and out, the home flaunts a light-filled living zone upon entry complemented by easy-care laminated floorboards. Centrally positioned, the dining domain and sleek kitchen offer the ideal environment for relaxed mealtimes, with quality appliances, walk-in pantry, window splashbacks and breakfast bar certain to please, plus sliding doors out to the covered alfresco deck allowing for easy enjoyment of the outdoors. Parents will relish the privacy of the luxurious main bedroom, peacefully positioned on the ground floor and enhanced by walk-in robe and elegant ensuite, while three additional robed bedrooms are located upstairs, alongside the sparkling family bathroom and study with built-in desk. Further adding to the appeal, Euro laundry, powder room, double garage with internal access, camera security and split system heating and cooling for comfort.

THE FEATURES- Stylish four-bedroom, two-bathroom town residence- Ground floor main bedroom features WIR & luxe ensuite - Three further robed bedrooms & study positioned on first floor- Family bathroom with bath, vanity, shower & toilet- Stunning covered alfresco deck area overlooking gardens- Split system heating & cooling in living & all bedrooms- Double glazed windows throughout- Double garage with internal access

THE LOCATION Ideally situated close to parkland and schools including Berwick Fields Primary, Nossal High and Heritage College, within minutes of trains and the vibrant Berwick main street hub complete with an assortment of shops, cafés and restaurants, and within easy reach of Westfield Fountain Gate and the Monash Freeway.