

**1/12 Station Road, Montmorency, Vic 3094**



**Townhouse For Sale**

Saturday, 13 April 2024

1/12 Station Road, Montmorency, Vic 3094

**Bedrooms: 3**

**Bathrooms: 2**

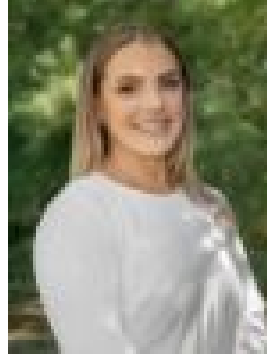
**Parkings: 2**

**Area: 215 m2**

**Type: Townhouse**



Scott Nugent  
0438054993



Hayley White  
0423523926

**\$860,000 - \$940,000**

EXPRESSIONS OF INTEREST CLOSING TUESDAY 7TH MAY AT 3PM (UNLESS SOLD PRIOR) Fusing generous space with on-trend style, this modern home indulges families with an indoor-outdoor lifestyle, positioned a short walk from Were Street shops and cafes, Montmorency Train Station, and local parks all within arm's reach. Featuring soothing tones and hardwood floors, the vast open-plan living areas provide a warm and welcoming atmosphere, overlooking a striking kitchen appointed with a granite breakfast bar, quality appliances and terrific storage. The master bedroom enjoys seclusion, featuring a walk-in robe and a contemporary ensuite with an oversized shower and dual basin vanity, leading to the upper floors where you will find two additional robed bedrooms and a stylish family bathroom. When it comes to entertaining, there's no better place than the private alfresco courtyard, tucked securely behind a high fence, and enhanced by a sunny open-air deck. Other comforts include ducted heating, refrigerated cooling, split system air conditioning, a water tank and a double auto garage with internal access. In a lifestyle location, you're a short stroll from the vibrant hub of Were Street shops, cafes and restaurants, Montmorency Train Station, Primary School and Secondary College, with seamless access to a wide range of local parks and trails, Greensborough Plaza and Eltham Village.