

1/1326 Gold Coast Highway, Palm Beach, Qld 4221

Unit For Sale

Monday, 22 April 2024

1/1326 Gold Coast Highway, Palm Beach, Qld 4221

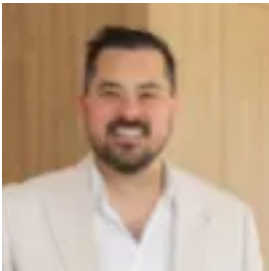
Bedrooms: 2

Bathrooms: 1

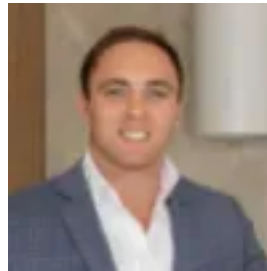
Parkings: 1

Area: 60 m2

Type: Unit



Josh Willatt
0755340300



Tyler Clark
0755340300

Offers over \$599,000

Occupying a premium position just footsteps to the pristine shores of Palm Beach and boasting a brand new coastal-inspired renovation, this ground floor apartment presents the perfect opportunity for investors, first home buyers or young couples looking for a complete turn-key package.- Exceptional location; enjoy easy beach access just across the road- Newly renovated; simply move in and enjoy this prime location- Open plan living space enjoys excellent natural light, VJ panelling- Beautiful kitchen features stone benchtops and soft close cabinetry- Modern bathroom complete with matte black fittings, custom joinery- Two generous bedrooms boast built in wardrobes and ceiling fans- Perfect north-east aspect, single lock up garage and air conditioning- Perfect for astute investors, young couples or first home buyers- Low body corporate fees, high growth, close to public transport- Stroll to local eateries, Burleigh headland and Tallebudgera Creek- Council Rates: \$2,414.46 annum. Water Rates: \$1,475.92 per annum.- Rental appraisal: \$700 per week