

1/135 Spring Street, Middle Ridge, Qld 4350



Unit For Sale

Tuesday, 9 January 2024

1/135 Spring Street, Middle Ridge, Qld 4350

Bedrooms: 3

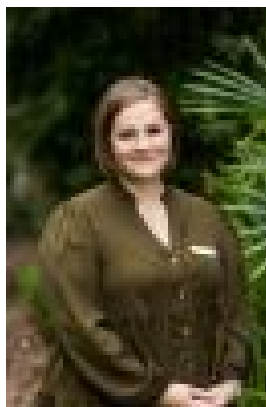
Bathrooms: 2

Parkings: 2

Type: Unit



Gary Kowaltzke
0408357163



Anne Jurgs
0417641313

Offers Over \$749,000

Looking for the perfect alternative to the demands of a home and yard? then this exceptional property will impress as it offers the feel and size of a house without the maintenance. Located in a prime Middle Ridge location, close to major shopping centres, medical centre, chemist and the golf course, this luxury three bedroom villa is part of small gated complex of four. Situated at the front of the complex with the added bonus of a private front yard, this villa has been well designed with an intelligent layout that offers generous living spaces, large bedrooms, study and outdoor alfresco, while impressive finishes including bamboo flooring, carpet to bedrooms, stone bench tops throughout and quality appliances only add to the overall high end feel of this property.

- 3 generous built-in bedrooms (master with WIR)
- 2 indulgent bathrooms (main & ensuite)
- Study nook
- Generous open plan living/dining
- Classic white 2pac joinery is a feature of this well designed kitchen
- Fisher & Paykel appliances including electric cooktop, wall oven & dishwasher
- Undercover alfresco with built-in BBQ
- 8'6" ceilings
- Reverse cycle air conditioning to living & master
- Ceiling fans to living & all bedrooms
- Double garage with remote control access has a storage cupboard & sealed floors
- Quality shutters and roller blinds throughout
- Fully fenced private yard space with no maintenance synthetic turf
- TV Antenna & NBN
- Body corporate fees = \$900/qtr
- Walking distance to local shops which include medical centre, chemist & food outlets
- Shop at Woolworths at The Ridge, Aldi or Coles & K-Mart at Toowoomba Plaza
- Close to 7 Springs Medical Centre which boasts 3 general practices & a dental practice

For full details please contact Gary Kowaltzke
General Rates net 1/2yr \$1103.57
Water Access Charge net 1/2yr \$315.29