

**1/15 Rose Street, Capel Sound, Vic 3940**



**Townhouse For Sale**

Saturday, 4 May 2024

1/15 Rose Street, Capel Sound, Vic 3940

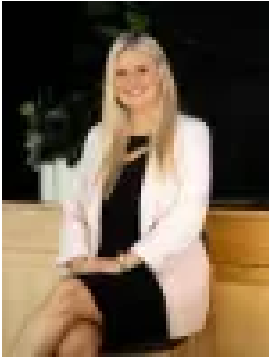
**Bedrooms: 4**

**Bathrooms: 3**

**Parkings: 2**

**Area: 315 m2**

**Type: Townhouse**



Jade Springer  
0359852600



Ben Nutbean  
0413125996

**\$1,000,000 - \$1,100,000**

GRAND OPEN SATURDAY 11TH OF MAY AT 1:00PM Boasting a prime location just 400\* m from the water's edge, this fantastic Southern Peninsula property offers a perfect blend of style, comfort, and convenience. Built in 2017 and featuring its own street frontage, the contemporary facade features clean lines and a minimal aesthetic complimented by low maintenance landscaping, whilst the modern interiors showcase premium finishes including solid European oak flooring, quality wool blend carpeting, bespoke fitted wardrobes and a custom-fitted office space which offers ample storage and versatility to accommodate your lifestyle needs. Year-round comfort is further ensured through the inclusion of a Daikin integrated heating and cooling system that provides optimal climate control in every season. The kitchen is a culinary enthusiast's dream, with Bianca Veneto stone benchtops and top-of-the-line appliances, offering both style and functionality - and whether you're entertaining guests or enjoying quiet moments of relaxation, the seamless flow from the indoor to outdoor spaces creates an inviting ambience for all occasions. Located just moments to the foreshore and a short drive to either Rosebud Plaza, or Rye Village, from your doorstep you are also close to an array of exciting local amenities including recreational activities, restaurants, water sports, schools, medical and shopping facilities. Don't miss out on this exceptional opportunity to secure your dream peninsula lifestyle and book your private inspection today! Property Features Include:- Modern quality townhouse built in 2017.- Approx 400\* m to the foreshore.- Bianca Veneto stone benchtops.- Bespoke fitted wardrobes.- Custom fitted office.- Daikin integrated heating cooling system.- Approx 400\* m to the foreshore. - Solid European Oak flooring.- Quality wool blend carpet.- Own street frontage. \*All distances and measurements are approximate only.