

1/15 Whittens Lane, Doncaster, Vic 3108



Unit For Sale

Tuesday, 6 February 2024

1/15 Whittens Lane, Doncaster, Vic 3108

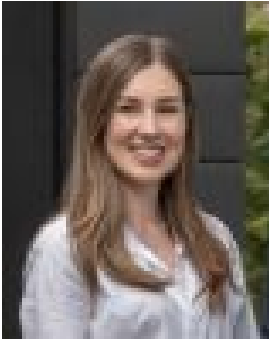
Bedrooms: 3

Bathrooms: 1

Parkings: 2

Area: 341 m2

Type: Unit



Erin McDougall
0439004696



Daniel Broadbent
0424155476

\$850,000 - \$930,000

In an elevated position at the front of the property amidst well-maintained grounds, this substantial single level brick unit offers impressively spacious interiors, with two separate living areas and two private low-maintenance courtyards perfect for entertaining. Located in a desirable cul-de-sac and just a 200m stroll from lush Koonung Creek Trail bushland and buses, the home is within walking distance of Westfield Doncaster shopping centre, restaurants & public library, and is conveniently accessible from the Eastern Freeway. At the front of the home, a large living room features polished timber floors, with two elegant bay windows bathing the space in natural light. At the rear, a separate second living and entertaining room offers massive storage areas and a verdant leafy outlook, flowing to an expansive paved front courtyard framed by private garden borders. A large skylit dining area is positioned alongside an updated modern kitchen with ample storage space, as well as stainless steel appliances including a dishwasher, an electric oven and gas cooktop, plus a view to the rear courtyard. Three bedrooms, including a good sized master with mirrored built-in wardrobes, are complemented by a renovated contemporary central bathroom with floor-to-ceiling tiles and a stone vanity. The home also includes a second W/C, and a separate laundry. Featuring gas ducted heating, split-system air conditioning, security screen doors, and a remote double lock-up garage with adjoining shed, the home is zoned for both Koonung Secondary College and Box Hill North Primary School.