

**1/16 Breckenridge Road, Logan Reserve, Qld 4133**

**ÉLEVER.**

**Duplex/Semi-detached For Rent**

Saturday, 4 May 2024

1/16 Breckenridge Road, Logan Reserve, Qld 4133

**Bedrooms: 4**

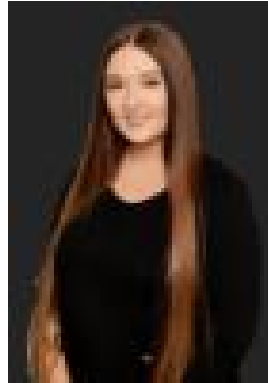
**Bathrooms: 2**

**Parkings: 2**

**Type: Duplex/Semi-detached**



Jane Stenson  
(07)30409949



Megan McCarthy  
(07)30409949

**\$620 pw**

Introducing 'Rosebank Estate': an idyllic enclave nestled between Brisbane and the Gold Coast, harmonizing the vibrancy of urban living with the tranquility of nature. Nestled along the serene Logan River, every convenience is at your fingertips, from childcare and educational facilities to medical services, public transport, and recreational amenities. With a charming community parkland, the setting is nothing short of picturesque. With seamless access to the motorway, commuting becomes effortless, whether it's a daily trip to the CBD or a spontaneous coastal retreat. This newly constructed home boasts an array of features, including:

- \* A sunlit open-plan kitchen, dining, and family area
- \* Split system air conditioning to living area and master bedroom
- \* A contemporary kitchen equipped with stainless steel appliances, including a dishwasher
- \* A luxurious master bedroom complete with ensuite and walk-in robe
- \* Three generously sized bedrooms, each with mirrored sliding door built-in robes
- \* An undercover alfresco area for outdoor entertaining
- \* A double lock-up garage with remotes and internal access
- \* Ceiling fans throughout for added comfort
- \* A fully fenced yard with low-maintenance landscaping

Discover a haven where simplicity reigns supreme at 'Rosebank Estate'. To book a time to inspect, simply click on "email agent" or the Book Inspection Button to arrange. By registering, you will be INSTANTLY informed of any updates changes or cancellations for your appointment.