

1/17 Hudson Street, Whitebridge, NSW 2290



Townhouse For Sale

Tuesday, 6 February 2024

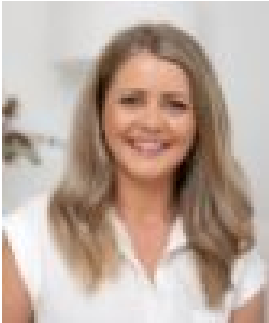
1/17 Hudson Street, Whitebridge, NSW 2290

Bedrooms: 3

Bathrooms: 2

Parkings: 1

Type: Townhouse



Stephanie Jordan

0413452297

\$900,000 - \$930,000

Stylish, effortless and entirely appealing, this immaculate townhouse delivers light-filled low maintenance living elevated by a gorgeous green outlook, just a short stroll from Whitebridge shops and the Fernleigh Track. Expanding over two carefully considered levels, the home feels bright and inviting, complemented by quality appointments throughout. On the upper level, open-plan living extends seamlessly to a fabulous entertainer's balcony, complemented by a stunning kitchen and louvred windows that catch cooling through-breezes thanks to its elevated position. With one large bedroom upstairs, there are two further bedrooms on the lower level, one of which opens out to a picturesque verandah and grassy courtyard. Flawless in design, both the ensuite and main bathroom are sleekly appointed, and are joined by an internal laundry and single garage to complete this very attractive package.*?Versatile open-plan living enjoys lush, green outlook over surrounds, extending out to entertainer's balcony*?Gourmet kitchen boasts chic white-on-white cabinetry and stone benchtops, complemented by modern stainless-steel appliances, a gas stovetop and waterfall island breakfast bar*?Airy upper-level bedroom with large built-in robe, serviced by sleek jack-and-jill bathroom *?Third bedroom could act as second living space, featuring sliding doors to front verandah and grassy courtyard*?Split-system AC in open-plan assists in keeping the home comfortable year-round*?Additional features include an internal laundry, under-stair storage and ground-floor storeroom*?Sought-after location just 270m walk from Fernleigh Track, and moments from Dudley Beach and Redhead Beach*?Walk 550m to Whitebridge shops, services and cafes*?Close to nearby oval, tennis courts and netball courts*?Short drive to zoned schools Charlestown East Public School (1.8km) and Whitebridge High School (1.7km)Council Rates: \$1892 PA approxWater Rates: \$243 + Usage PQ approxStrata Levies: \$865.50 PQ approxRental Potential: \$680 - \$720 pw approxWhilst Lisa Macklin Property has taken all care preparing this advertisement and the information contained has been obtained from sources that we believe to be reliable, Lisa Macklin Property does not represent, warrant, or guarantee the accuracy, adequacy, or completeness of the information. Lisa Macklin Property accepts no liability for any loss or damage resulting from reliance on this information and interested parties