

1/2 Botany Crescent, Tweed Heads, NSW 2485

McGrath

Sold Duplex/Semi-detached

Saturday, 13 January 2024

1/2 Botany Crescent, Tweed Heads, NSW 2485

Bedrooms: 3

Bathrooms: 2

Parkings: 1

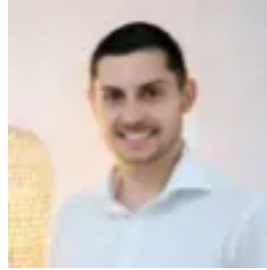
Area: 265 m²

Type:

Duplex/Semi-detached



Chris Holt
0755068900



Joel Leach
0755068900

\$900,000

Beautifully renovated interiors with a sun-drenched layout and delightful parkland views combine to create a low-maintenance haven perfect for downsizers or retirees. Recently modernised, this three bedroom villa features a large covered alfresco area and is just a short stroll to the Tweed River. - Immaculately presented home in the well-maintained Palm Villas complex- Convenient locale within walking distance to Club Tweed and the hospital- Spacious open plan living/dining area features ducted air-conditioning- Contemporary kitchen showcases a dishwasher and stone benchtops- Entertaining is a breeze on the timber alfresco with peaceful park view- Expansive paved terrace with shade cloth, gated access to Uniacke Park- Comfortable main suite enjoys generous built-ins, stylish modern ensuite- Choose from two further good-sized bedrooms, both with ceiling fans - Main bathroom with bath, internal laundry, plantation shutters throughout- Close to riverfront walking path, stroll to the library, just 3 mins to Tweed Mall