

**1/2 Newman Road, Wantirna South, Vic 3152**



**Unit For Sale**

Wednesday, 8 May 2024

1/2 Newman Road, Wantirna South, Vic 3152

**Bedrooms: 2**

**Bathrooms: 1**

**Parkings: 2**

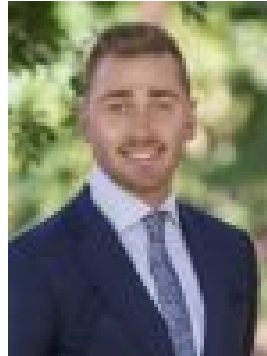
**Area: 270 m2**

**Type: Unit**



Derek Chi

0416330218



Brad Spencer

0439899920

**\$700,000 - \$770,000**

Nestled in the heart of Wantirna South, 1/2 Newman Road invites you to experience luxurious living at its finest. This exquisite 2-bedroom, 1-bathroom residence with a 2-car garage boasts unparalleled elegance and modernity, offering you the perfect blend of comfort and sophistication. Step into this meticulously designed home and be greeted by spacious interiors flooded with natural light, creating an ambiance of warmth and serenity. The open-plan layout seamlessly integrates the living, dining, and kitchen areas, providing an ideal space for entertaining guests or enjoying cozy family evenings. The gourmet kitchen is a chef's delight, featuring premium appliances, sleek cabinetry, and ample countertop space, making meal preparation a breeze. Whether you're hosting a dinner party or simply enjoying your morning coffee, this kitchen is sure to inspire culinary creativity. Retreat to the luxurious master suite, where tranquility awaits. Pamper yourself in the ensuite bathroom, complete with a lavish bathtub and a rejuvenating shower, offering the ultimate relaxation experience after a long day. Outside, indulge in alfresco dining or soak up the sun in the beautifully landscaped garden, perfect for enjoying the Australian climate all year round. With plenty of space for outdoor activities. Conveniently located, 1/2 Newman Road offers easy access to a wealth of amenities. Just moments away, you'll find a variety of shopping destinations, including Westfield Knox and The Glen Shopping Centre, where you can indulge in retail therapy or enjoy a delicious meal at one of the many cafes and restaurants. For those seeking outdoor recreation, nearby parks such as Jells Park and Llewellyn Park provide picturesque settings for picnics, leisurely strolls, or energetic workouts. Plus, with top-rated schools, medical facilities, and public transport options in close proximity, everything you need is within easy reach. Don't miss this opportunity to make 1/2 Newman Road your new address. Experience the epitome of luxury living in Wantirna South and create unforgettable memories in your new home. Schedule a viewing today and start living the life you deserve! AUCTION - 15th of June at 12pm