

1/20 Catherine Avenue, Doncaster East, Vic 3109



Townhouse For Sale

Friday, 29 March 2024

1/20 Catherine Avenue, Doncaster East, Vic 3109

Bedrooms: 3

Bathrooms: 2

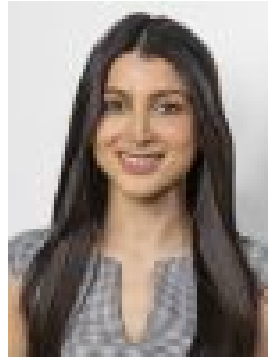
Parkings: 2

Area: 271 m2

Type: Townhouse



Mark Di Giulio
0407863179



Raha Hossain
0449054007

\$1.1m - \$1.21m

Enjoying an elevated outlook within the Milgate Primary and prestigious East Doncaster Secondary College school zones, this beautifully presented and well-maintained property could not be better placed for quiet yet connected living. Situated next to the picturesque Landscape Drive Reserve, step inside via an elevated entrance to a clever combination of carpeted and timber floors, which flow throughout a generous floor plan flooded with natural light. The large carpeted formal lounge and dining area provides plenty of room to convene and makes the most of its elevated aspect, before you step through to a kitchen with built-in stainless steel gas cook top and range hood, a dishwasher and an adjoining meals space. Bedrooms with robes are housed away from the main living zones, the master includes its own en-suite, while all have proximity to the matching central bathroom with shower and bath. A low-maintenance courtyard, gas ducted heating, evaporative cooling and a double garage are valued additions to a property that could simply not be better placed. On the doorstep of the Landscape Drive Reserve and playground, within walking distance to Milgate and Our Lady of The Pines primary schools, close to East Doncaster Secondary College, Tunstall Square Shopping Centre, Devon Plaza and the Jackson Court Shopping Village, as well as enjoying great connection to Westfield Doncaster Shoppingtown, Springvale Rd, Doncaster Rd, Manningham Rd, Tram Rd and the Eastern Freeway.