

**1/20 Donald Grove, Chelsea, Vic 3196**



**Sold House**

Thursday, 12 October 2023

1/20 Donald Grove, Chelsea, Vic 3196

**Bedrooms: 2**

**Bathrooms: 1**

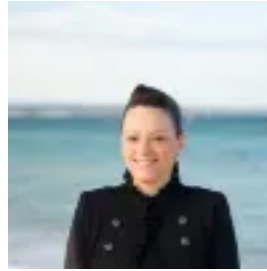
**Parkings: 4**

**Area: 362 m2**

**Type: House**



Luke Howard  
0397819600



Kristyn Buckley  
0397819600

**\$705,000**

Unlock the potential of the spacious 2 brm Unit with double garage. Located in one of the best streets in Chelsea, this single level two-bedroom garden villa will hold enormous appeal with its standalone style, supersized wraparound yard and abundance of natural light. One of only two on the block and enjoying its own street frontage and no body corporate. Whether taking your first step into the market, looking for something to flip, scaling down or investing in this popular pocket, you'll love the potential that this property offers. Renovate or extend up and go double storey (stca), needing cosmetic improvement and plenty of scope to add your own flair. With 'great bones' and generous room sizes allow for someone with imagination and some DIY skills to immediately add value. Sliding doors lead you to an enviable private outdoor space, where you'll love to entertain or for the kids to run around. Both bedrooms benefit from built-in robes and ceiling fans, serviced by an original bathroom and separate toilet, the laundry also has separate access to the courtyard. Complete with split sytem heating and cooling, plus the double garage and addition off street parking for another 2 cars. Bus stops, parks, Pre school train Station, Chelsea shops and white sandy beach plus cafes are within walking distance.