

1/20 Lorimer Crescent, Elderslie, NSW 2570

House For Sale

Tuesday, 20 February 2024



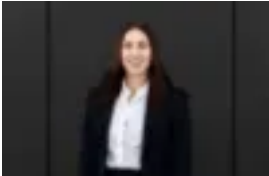
1/20 Lorimer Crescent, Elderslie, NSW 2570

Bedrooms: 3

Bathrooms: 2

Parkings: 2

Type: House



Ashleigh Maiava
0491175637

\$749,000

Nestled in the sought after Camden Heights Estate lies 1/20 Lorimer Crescent, Elderslie. A cozy townhouse, positioned perfectly facing a nature reserve with uninterrupted views. You'll be blown away by the tranquility of Lorimer Crescent. Being on ground floor, coupled with no opposing neighbours and an abundance of street parking, you'll find this home will definitely tick a few of your boxes! Features:- Built-in robes & sliding doors in all bedrooms, leading out to your very own alfresco- Ensuite to master bedroom- Split system air conditioning- 2.55m ceilings creating a spacious feel- Modern kitchen complete with 20mm stone bench-tops & a 600mm gas cooktop- Internal laundry- Natural gas outlets- Floor-to-ceiling tiled bathrooms(200m) Camden Golf Club(700m) Petite Early Learning Journey(700m) Elderslie Public School(1.3km) Kirkham Oval(1.6km) Elderslie High School PA Real Estate and associated companies take every reasonable step to ensure the information communicated is accurate. However, we encourage all parties to conduct their own enquiries.