

1/21-23 Helmer Crescent, Thomson, Vic 3219



Townhouse For Sale

Tuesday, 7 May 2024

1/21-23 Helmer Crescent, Thomson, Vic 3219

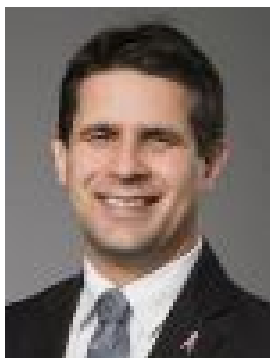
Bedrooms: 2

Bathrooms: 1

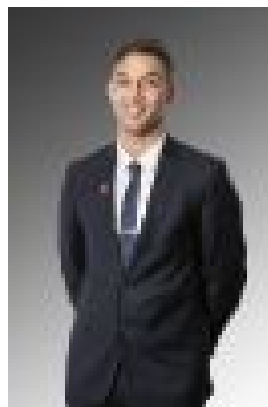
Parkings: 1

Area: 355 m2

Type: Townhouse



Matthew Pearce
0425749326



William Jones
0403707419

\$469,000 - \$489,000

Set only minutes from all that 3219 has to offer including local shopping centres, the Bellarine Rail trail, cafes and sporting facilities this outstanding 2 bedroom townhouse set on a high street frontage on an impressive allotment of approximately 356 square metres is sure to impress even the most discerning of buyers. Meticulously presented by the current tenants this impressive townhouse has a plethora of features including built in robes and wall to wall carpet in both spacious bedrooms, plus ceiling fan in the master. The naturally sun lit kitchen and meals area is perfect for the home chef with stainless steel dishwasher, gas cook top with electric oven and rangehood, built in pantry and plenty of storage and bench space and adjoins the open plan dining and meals area. The central bathroom services the home well with separate shower and bath, quality fixtures and fittings and full width mirror while the laundry has direct access to the expansive yard. Additional extras include reverse cycle heating and cooling unit in the lounge along with gas log and upright heater, outdoor awnings for extra privacy and a truly unique front yard that has plenty of room for the dogs to run around or the kids to play in a secure environment! The single car garage features internal and outside access and for those that require public transport there's a bus stop 200 metres from your door and South Geelong station is just a stroll away plus there's easy access to the Geelong CBD and all that 3219 has to offer. Get in now and plan for your future right here. Make it yours!