

# 1/21 Becket Street South, Glenroy, Vic 3046

## Townhouse For Sale

Wednesday, 21 February 2024



1/21 Becket Street South, Glenroy, Vic 3046

Bedrooms: 3

Bathrooms: 2

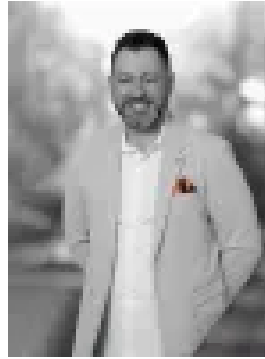
Parkings: 1

Area: 216 m2

Type: Townhouse



Marwan Abdulwahed  
0420647396



Frank Antonello  
0404999064

**AUCTION this Saturday @ 2:00 PM: \$565k - \$595k**

Introducing 1/21 Becket Street South, Glenroy - your gateway to comfortable, convenient living. This low-maintenance home boasts 3 bedrooms, 2 bathrooms, and a spacious open-plan layout, offering the perfect blend of functionality and style. Whether you're a first-time buyer, a growing family, or an astute investor, this property caters to all. Situated in a prime location, enjoy easy access to everything the area has to offer, including swift freeway connections to both Melbourne CBD and the airport. With schools, shops, cafes, parks, and transport options at your fingertips, this home captures modern living at its finest. Don't miss out - schedule a viewing today and experience the charm of 1/21 Becket Street South, Glenroy. Make your move today - Contact C+M Residential. 'Helping You Find Home'

**THE UNDENIABLE:** • Brick & Rendered Townhouse • Built-in 2009 approx. • Land size of 216m<sup>2</sup> approx. • Building size of 16sq approx. • Foundation: Concrete slab

**THE FINER DETAILS:** • Kitchen with S/S appliances, ample benchtops & cupboard space, tiled splash back, finished with tiled flooring • Sizeable open-plan meals & living zone with tiled flooring • 3-Bedrooms with robes & carpeted flooring, master with ensuite • 2-Bathrooms with shower, bathtub to main, single vanity, combined toilet & tiled flooring • Laundry with single trough • Ducted heating throughout the home • Additional features include high ceilings, remote shutters, ample storage areas, plus so much more • Street facing home with a rear courtyard, established gardens & lawns • Single carport • Potential Rental: \$500 - \$550 p/w approx. • Body Corp/Strata Insurance: \$416 p/qtr approx.

**THE AREA:** • Close to Glenroy Central Shopping Village. Glenroy & Oak Park train station, & bus hub • Surrounded by parks, reserves & schools, plus Northern Golf Club • Only 12.5km from the CBD with easy City Link, Ring Road, & airport access • Zoned Under the City of Merri-bek - General Residential Zone

**THE CLINCHER:** • Where low maintenance living meets convenience • A hop-skip-jump to Melbourne CBD and Airport

**THE TERMS:** • Deposit of 10% • Settlement of 30/45/60 days Secure your INSPECTION Today by using our booking calendar via the REQUEST INSPECTION button... \*All information about the property has been provided to C+M Residential by third parties. C+M prides itself on being accurate, however, has not verified the information and does not warrant its accuracy or completeness. Parties should make and rely on their own inquiries in relation to this property.

Marwan Abdulwahed: 0420 647 396 Frank Antonello: 0414 567 768