

1/21 Edinburgh Crescent, Woollooware, NSW 2230

FOX & WOOD

House For Rent

Friday, 17 May 2024

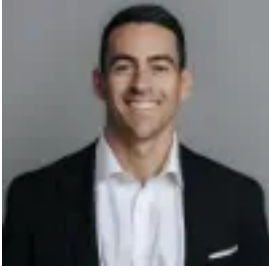
1/21 Edinburgh Crescent, Woollooware, NSW 2230

Bedrooms: 3

Bathrooms: 2

Parkings: 1

Type: House



Danny Fox

0408718118

\$1,000 Per Week

Quietly positioned in the heart of Woollooware, this generous North facing apartment style home is perfect for those in search of a relaxed coastal lifestyle just moments from shops, cafes, transport and beaches. The property on offer is the entire top floor of a substantial home and provides luxury low maintenance living in a quiet family friendly street. Why you'll love it -

- Ideal Northerly aspect bathed in natural light.
- Spacious open plan living and dining room with timber floors and air conditioning.
- Stunning kitchen with gas cooking and plenty of cupboard and bench space.
- 3 generous bedrooms, main with ensuite and walk in wardrobe.
- Modern bathroom with bath tub.
- Internal laundry.
- Covered North facing entertainers balcony.
- Off street parking space included.
- Wonderfully quiet location with Woollooware shops, public school and train station just up the road