

1/21 High Street, Watsonia, Vic 3087



Sold House

Friday, 1 March 2024

1/21 High Street, Watsonia, Vic 3087

Bedrooms: 3

Bathrooms: 1

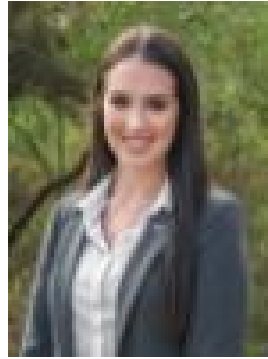
Parkings: 1

Area: 325 m2

Type: House



Brett Sparks
0411131938



Olivia Debono
0449528100

\$937,000

SOLD by Jellis Craig. Brimming with charm and a sense of yesteryear, this contemporary weatherboard home enjoys a premium lifestyle location. Free of body corporate, it has been reimagined with a commitment to quality and an eye for style to seamlessly blend modern luxuries with classic highlights. Tucked behind a picket fence, a path through clipped hedges is the ideal introduction to perfect single-level proportions that deliver exceptional living and enticing entertaining options both indoors and out. Tasmanian Oak flooring, decorative cornice, double-hung sash windows and profiled skirting boards feature in an interior that has been opened up and styled to introduce free-flowing open-plan living on a generous scale. Stretching from French doors opening to the front verandah, it glides past a stone kitchen featuring a waterfall island and quality stainless steel appliances before seamlessly transitioning to the rear deck. Fitted with a cantilevered umbrella so you can choose between sun and shade, it anchors a rear yard offering lush lawn, an outdoor kitchen with BBQ and Pizza oven and undercover parking behind an automatic door. Fitted with bespoke storage solutions, one open side creates the perfect covered alfresco extension when the weather turns. Complementing the living spaces are three bedrooms sharing a sleek contemporary bathroom. Offering brushed bronze tapware, a walk-in shower and a back-to-wall bath, it's a touch of luxury the entire family will enjoy. A feature gas fire in the living area, complemented by ducted heating and multiple split system units throughout, leads to a list of extras, including an NBN connection, a sprinkler system front and back, fitted laundry with a second toilet and custom-made window coverings throughout. This home enjoys the convenience of a premium lifestyle position a short walk into the heart of Watsonia Village, Watsonia Station and the soon-to-be-completed Watsonia Town Square, cafes, childcare centres and a choice of public and private schools.