

1/22 Davenport Terrace, Wayville, SA 5034



Unit For Sale

Wednesday, 1 May 2024

1/22 Davenport Terrace, Wayville, SA 5034

Bedrooms: 2

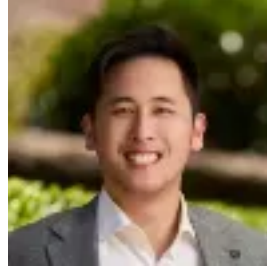
Bathrooms: 1

Parkings: 1

Type: Unit



Daniel Seach
0870819201



Peter Li
0415413250

\$449k - \$490k

Stylishly Renovated Unit in an Unbeatable Location Imagine stepping out of your front door and having the South Parklands and the tramline just meters away. Whether it's a leisurely stroll through the greenery or a quick tram ride to the CBD, this location has you covered. The moment you walk in, you'll appreciate the hardwood floors and the open-plan layout, perfect for both relaxation and entertaining. Two nicely sized bedrooms await, with the master bedroom basking in natural light. Picture lazy Sunday brunches in your very own private courtyard. The kitchen has been fully renovated featuring a modern colour scheme, stainless steel appliances, a gas cooktop, a dishwasher, updated cabinetry & storage, plus tiled splashbacks. The bathroom and laundry have been thoughtfully modernised, ensuring a stylish experience. Say hello to convenience and aesthetics! No need for long strides, you're just a hop away from the Sunday Farmers Market at Wayville Showgrounds, the trendy boutiques and restaurants on King William Road & Goodwood Road, and the cbd.- Solid brick and conveniently located on the ground floor- Enjoy privacy and style with custom plantation shutters throughout- Hardwood floorboards & a functional open-plan layout- Fully renovated kitchen, with new appliances & extensive cabinetry- Modernised bathroom & separate laundry with courtyard access- Two good-sized bedrooms, both with built-in robes- Private rear courtyard, with lush greenery & tool shed- Undercover car parking for 1 car at the rear of the group- Prime location on the fringe of the cbd in a thriving community- A short walk to the tram and bus, showgrounds, Goodwood & KWR's- Zoned to Adelaide High School & Botanic High School

Other Information: Title: Strata
Title Council: City of Unley
Zoning: Established Neighbourhood
Build: c1970
Internal: 74sqm
Council rates: \$980.90 per annum
SA Water: \$153.70 per quarter
Emergency Services Levy: \$102.15 per annum
Strata Manager: Strata Management SA
Strata Rates: \$487.20 per quarter
Rental Assessment: \$470 per week

All information has been obtained from sources deemed to be accurate, however, it cannot be guaranteed and neither the agent, agency or vendor accepts any liability for errors, omissions or oversights. Any reference to rates/outgoings, school zoning, planning consent, land/building sizes, build year, and solar panels are all approximate. It is recommended any interested parties conduct their own due diligence.

RLA325330.