

**1/22 Forster Street, Mitcham, Vic 3132**



**Townhouse For Sale**

Saturday, 13 April 2024

1/22 Forster Street, Mitcham, Vic 3132

**Bedrooms: 4**

**Bathrooms: 2**

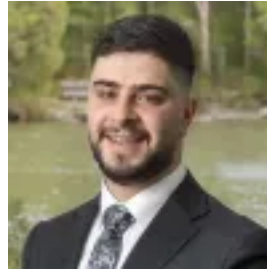
**Parkings: 2**

**Area: 295 m2**

**Type: Townhouse**



Kahlen Chen  
0388450888



Michael Ganavas  
0388450888

## **AUCTION \$1,090,000 - \$1,199,000**

Introducing 1/22 Forster Rd, Mitcham, a stunning two-story townhouse that blends modern architectural style with unparalleled comfort and sophistication. This residence, adorned with a sleek brick facade, features tall, north-facing windows that flood the living spaces with sunlight, creating a bright and welcoming environment. The heart of the home is its open plan living area, offering a perfect blend of elegance and functionality, complemented by a secluded retreat area that connects seamlessly to the outdoor space. The interior boasts a contemporary feel that's both stylish and easy to maintain. The kitchen, a vision of modern efficiency, includes a gas stove, oven, and dishwasher, all in stainless steel, set against a chic glass tile splashback. This exquisite townhouse offers four generously sized bedrooms, each carpeted for comfort and featuring built-in robes. The master bedroom is a true sanctuary, complete with an ensuite and shower, promising privacy and relaxation. Complete with ceiling ducted heating and cooling to ensure comfort year-round, this home also includes a laundry room, automatic garage for secure parking, and water tanks for sustainability. The back courtyard and front yard provide tranquil outdoor. Situated in a prime Mitcham location, this home is within close proximity to Eastland Shopping Centre, Ringwood Heights Primary School, Ringwood Square Shopping Centre, Antonia Park Primary School, and Rangeview Primary School. This unbeatable location offers easy access to premier shopping, education, and recreational facilities, making 1/22 Forster Road not just a house, but a lifestyle choice for those seeking the perfect blend of elegance and convenience.