

1/23 Galeen Drive, Burleigh Waters, Qld 4220

Duplex/Semi-detached For Sale

Wednesday, 12 June 2024



1/23 Galeen Drive, Burleigh Waters, Qld 4220

Bedrooms: 4

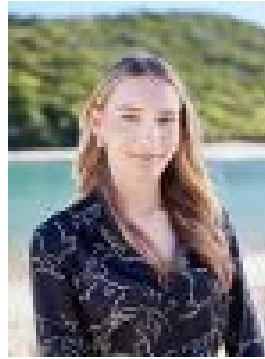
Bathrooms: 2

Parkings: 2

Type: Duplex/Semi-detached



Will West
0755766616



Sol Brown
0490774636

Auction

This stylishly renovated home truly has it all - from its prime location and welcoming atmosphere to its versatility as an entertainer for any occasion, or a leisurely retreat with afternoon drinks on the front deck while enjoying the sporting activities on the nearby oval. Nestled in a sought-after area, this spacious east-facing 4-bedroom duplex exudes a light and airy ambiance, surrounded by a plethora of amenities and just minutes away from the stunning Burleigh beaches, making it the ideal lifestyle choice. Featuring timber-look vinyl plank floors throughout and abundant natural light streaming in, the home boasts four generously sized bedrooms with ample built-ins and ceiling fans, three bedrooms equipped with air conditioning and the master bedroom offering an ensuite and walk-in robe with access to the front deck. The sliding doors seamlessly blend indoor and outdoor living, connecting the air-conditioned open living, dining, and kitchen area to the sun-drenched front deck, creating a perfect space to relax, dine, or entertain guests alfresco while the children play in the expansive and fully fenced front yard. Additionally, the property includes a covered entertaining area at the back overlooking the inviting inground magnesium pool and lawn area, providing a delightful setting for the entire family to enjoy. This property truly encompasses everything you could desire for a fulfilling coastal lifestyle.

- Renovated 4-bedroom duplex home in a prime location
- Open plan living, dining & kitchen area opening out onto the front deck
- Large timber front deck perfect for entertaining family & friends
- Well-appointed kitchen with stone bench tops & plenty of cupboard space
- Large master bed with ensuite, walk in robes & air con with front deck access
- 3 further bedrooms with ample built/in space, ceiling fans, 2 with air con
- Undercover outdoor area overlooking the inviting magnesium pool
- Single lock up garage currently used as a playroom + off-street parking for 1 car
- Fully fenced rear grassed yard with side access plus a garden shed
- Across from Burleigh Sports complex, cricket pitches, AFL grounds & tennis courts
- Footsteps from the waterfront parkland & Galeen Drive Park playground
- Close proximity to the beach, lake, shops, cafes, library, childcare & schools

Properties of this size and in this central location don't come up often so be quick to inspect this one.