

1/23 Lantry Place, Anna Bay, NSW 2316



Duplex/Semi-detached For Rent

Thursday, 13 June 2024

1/23 Lantry Place, Anna Bay, NSW 2316

Bedrooms: 3

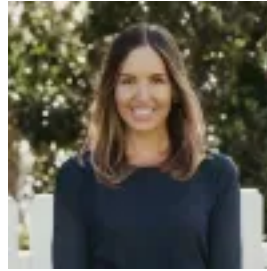
Bathrooms: 1

Parkings: 1

Type: Duplex/Semi-detached



Jacquie Ryan
0423353764



Rowena Hernandez
0431080054

\$690 per week

Welcome to 1/23 Lantry Place, Anna Bay! This freshly renovated 3 bedroom, 1 bathroom house is now available for lease. Freshly painted throughout and featuring a brand new modern kitchen with all new appliances, ample storage & a breakfast bar. The combined living and dining areas are open plan and look out onto the manicured front garden. All three bedrooms feature built-in robes, ceiling fans and new carpet. The internal laundry has been fully renovated and features a large bench and access to the rear yard, this property has everything you need for comfortable living. The property also boasts a remote garage, fully fenced yard, and eco-friendly solar panels. Located in a quite cul-de-sac this property offers privacy and convenience. Features Include; • Air-conditioning unit in living • New kitchen appliances • Built-ins in all three bedrooms • Ceiling fans throughout • Large fully fenced yard • Two way bathroom • Bath • Seperate toilet • Solar panels • Speer point & throughout gardens • 2 x Undercover alfresco areas Pets on application Contact us today to schedule a viewing.