

1/237 Midson Road, Epping, NSW 2121

STONE

Sold Townhouse

Wednesday, 10 April 2024

1/237 Midson Road, Epping, NSW 2121

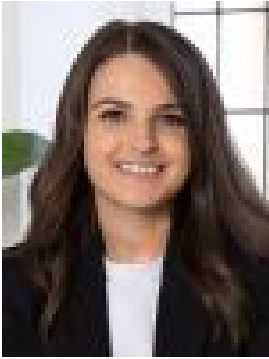
Bedrooms: 3

Bathrooms: 2

Parkings: 2

Area: 257 m2

Type: Townhouse



Chloe Mawass
0288661500



Jessica Zhou
0288661500

Contact agent

A timeless treasure in an ultra convenient setting, this cottage-style townhome caters to comfort and easy-care living with a lovely sense of warmth and character. It offers multiple spaces to enjoy and unwind in addition to a secure and low upkeep yard, positioned with a prime Epping address that's Cheltenham Girls, Carlingford High and Roselea Primary zoned - as well as 1.2kms to North Carlingford Village and 2.1kms to Epping station.- Characterised by polished timber floors, French windows and fresh paintwork- Casual kitchen meals area, formal dining or study and separate family lounge- Wraparound garden-view kitchen equipped with ample storage & an eat-in bar- Upstairs hallway connects all bedrooms as well as a flexible study nook space- Built-ins to two beds plus an ensuite to the main, full family-sized bathroom- Double lock-up garage, under-stair storage and split system air conditioning- Laundry with an extra w/c and access to a fully fenced, front gated courtyard- Centrally positioned between Beecroft and Epping stations and village shops
Council: \$316.20 per quarter
Water: \$171.41 per quarter
Strata: \$1,228.61 per quarter