

1/24 Eton Road, Cambridge Park, NSW 2747



Sold House

Tuesday, 27 February 2024

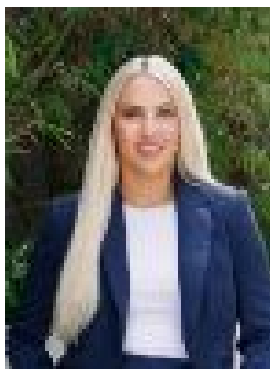
1/24 Eton Road, Cambridge Park, NSW 2747

Bedrooms: 3

Bathrooms: 1

Parkings: 2

Type: House



Paige Oliver
0477511118

\$692,500

Centrally located on a spacious corner block, this neat and tidy north facing home is perfect for the first homeowner, downsizer, or investor. Featuring a tidy kitchen and bathroom, three bedrooms with built-in robes and ceiling fans, a well-proportioned living area at the front of the property and a generous back yard featuring a paved area in the backyard. Overlooking Paterson Oval and within walking distance to local shops, schools and bus stops creates the optimum opportunity for a vast array of buyers!• Low maintenance living• Built in robes to three bedrooms• Well maintained home on a 323sqm (approx.) block• Walking distance to shops, schools, parks and public transportDon't miss out on this exceptional opportunity to secure your home. Contact Indi Cleary on 0439 547 367 today to arrange a private viewing and take the first step towards realizing your homeownership dreams!