

1/25 Addison Avenue, Athelstone, SA 5076

ALL ADELAIDE

Sold Townhouse

Tuesday, 23 January 2024

1/25 Addison Avenue, Athelstone, SA 5076

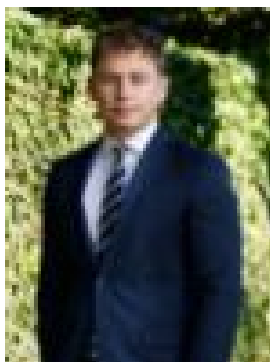
Bedrooms: 3

Bathrooms: 2

Parkings: 2

Area: 203 m2

Type: Townhouse



Blake Bryant
0476957176

\$666,000

Delightfully nestled at the front of a stylish modern group of townhouses, with an uninterrupted view over Black Hill Conservation Park, this ultra-modern executive townhouse offers thoughtful design and contemporary fittings across a clever 3 bedroom, 2 living area design. An extensive 17 panel solar system plus Alpha Eco-10 battery will ensure that your energy bills are always low while reverse cycle ducted air-conditioning and double-glazed windows ensures your year-round comfort. A spacious open plan ground floor design offers comfortable and convenient space for your casual living. Sleek tiled floors, fresh neutral tones, LED downlights, 2.7 m ceilings and effortless natural light combine in a spacious and desirable living space. Clever window placements offer a view over the adjacent reserve while a stunning modern kitchen provides a creative and engaging cooking space. Composite stone bench tops, timber grain cabinetry, recessed double sink, subway tiled splash backs, wide breakfast bar and pendant lighting feature. Step seamlessly outdoors and entertain on a generous alfresco portico, constructed under the main roof and overlooking a delightful lawn courtyard where there is plenty of space for kids and pets. Upstairs features 3 generous double size bedrooms, all with built-in robes. The master bedroom offers a bright ensuite bathroom and private parents retreat balcony. A clever media room to the upper level provides that valuable 2nd living space offers a great spot to sit back and enjoy the natural views over the adjacent reserve. An oversized single garage will accommodate the family car, completed by a clever laundry niche and adjacent single tandem carport. With a pick of the bunch location at the front of the group and thoughtful, considerate decor throughout, this appealing executive home is bound to attract the attention of the astute purchaser. Briefly: * Ultramodern executive townhouse with sweeping reserve outlook * Generous open plan ground floor living area with kitchen overlooking * Sleek tiled floors, fresh neutral tones, LED downlights, 2.7m ceilings and 2.35m doors * Sliding stacker doors from living room to alfresco entertaining * Tiled alfresco portico and generous lawn covered courtyard * Refreshing modern kitchen features composite stone bench tops, timber grain cabinetry, recessed double sink, subway tiled splash backs, wide breakfast bar and pendant lighting * 3 spacious, double size bedrooms, all with built-in robes * Master bedroom with ensuite bathroom and private retreat balcony * Stunning main bathroom with bath and separate shower * Ground floor powder room * Oversized single garage with auto panel lift door and clever laundry niche * Single tandem drive-through carport * 17 solar panels and Alpha Eco-10 battery * Ducted reverse cycle air-conditioning * Wraparound glass balcony with reserve views * Perfect executive home or ideal investment property What a delightful location nestled amongst notable reserves and public areas. Enjoy a verdant outlook to the Black Hill Conservation Park and Fifth Creek Trail, with Thornton Park Reserve also available for your exercise and relaxation. Nearby unzoned primary schools include Thorndon Park, Athelstone, Paradise and East Torrens Primary School. The zoned high school for this address is Charles Campbell College. Quality private schooling is available locally at St Ignatius College, Rostrevor College, Sunrise Christian School, St Francis of Assisi, St Josephs & Kildare College. Zoning information is obtained from www.education.sa.gov.au Purchasers are responsible for ensuring by independent verification its accuracy, currency or completeness. Newton Village Shopping centre is just down the road for your daily and weekly goods, while quality international designer shopping is nearby at Westfield Tea Tree Plaza.