

1/254-256 Canterbury Road, Heathmont, Vic 3135



Sold Unit

Monday, 23 October 2023

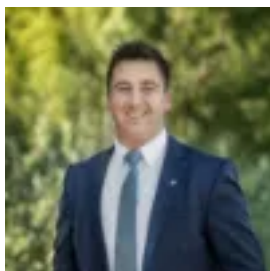
1/254-256 Canterbury Road, Heathmont, Vic 3135

Bedrooms: 2

Bathrooms: 1

Parkings: 2

Type: Unit



Alan Hodges
0398706211



Ash Thompson
0398706211

\$655,500

Superbly positioned at the front of a peaceful block of only four residences, this single level brick unit is surrounded by colourful established gardens, offering enchanting leafy views throughout. Ideally situated just metres from Heathmont Reserve and Heathmont Tennis Club, and within walking distance of Heathmont Station, buses, Dandenong Creek Trail and the local Heathmont Village shopping and café precinct, the location is also within easy reach of Jubilee Park, Aquinas College, Marlborough Primary School, Heathmont College and Eastland Shopping Centre. A generous open plan living area features multiple full-height windows, complemented by a skylit separate dining area. At the rear, glass sliding doors lead out to a private undercover deck and paved courtyard, creating a tranquil haven to relax in verdant garden surrounds. The light-filled kitchen includes a Bosch oven and Miele dishwasher, with a breakfast bar and ample inbuilt storage space. Two skylit bedrooms are each equipped with built-in wardrobes, with the master also featuring a ceiling fan. A skylit central bathroom includes a separate bathtub, and is set alongside a separate W/C and a laundry with direct outdoor access. Cared for by one owner since its construction, and featuring gas ducted heating, air conditioning, stylish sheer drapery and security screen doors at front and rear, the home also includes an oversized remote double lock-up garage with rear courtyard access.