

1/26-28 Truro Parade, Padstow, NSW 2211

Duplex/Semi-detached For Sale

Wednesday, 29 November 2023

Professionals

1/26-28 Truro Parade, Padstow, NSW 2211

Bedrooms: 3

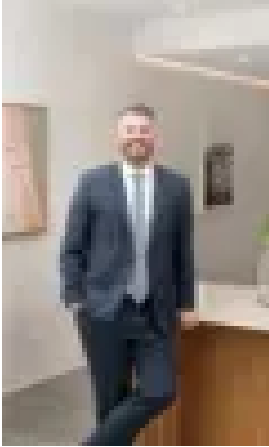
Bathrooms: 2

Parkings: 1

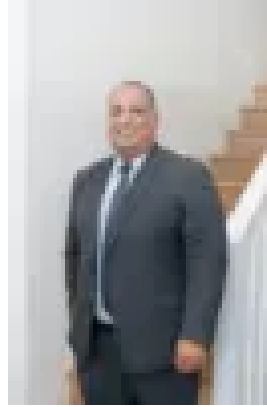
Area: 220 m2

Type:

Duplex/Semi-detached



Dean Owsnett
0297714555



Assad Romanos
0297714555

\$1,250,000 - \$1,350,000

An architecturally designed masterpiece townhouse in a complex set in the leafy suburb of Padstow. Located for a pinnacle lifestyle appeal and nestled in one of the area's most highly desirable locations, this tranquil, architecturally designed property provides a gateway to luxury living. Attributes of the property: * A three bedroom townhouse with built-in robes and the main bedroom boasts a lavish ensuite and walk-in robe * Sundrenched interiors, spacious open plan living and dining space * Gourmet kitchen with quality appliances comprising of a 900mm gas cooktop, 900mm oven, range hood, dishwasher, double sink and stone benchtop * A luxurious bathroom with main bathroom equipped with a freestanding bathtub * Internal laundry with stone benchtops * Samsung ducted air-conditioning, Bosch alarm system and video intercom * Single lock up garage with internal access * Sensational undercover alfresco area overlooking a child friendly and level grass yards * The property is conveniently located approximately 600m to Padstow Shopping Village and train station. On offer in a complex of 9 Brand New properties each with 3-4 bedrooms, offering free flowing interiors with spacious living areas, high ceilings with quality fixtures and finishes. Prices Ranging from \$1,300,000 - \$1,500,000. For further details or to arrange an inspection, please do not hesitate to contact exclusive listing agents Dean Owsnett & Assad Romanos.