

1/26 Heathmont Road, Ringwood, Vic 3134



House For Sale

Thursday, 13 June 2024

1/26 Heathmont Road, Ringwood, Vic 3134

Bedrooms: 4

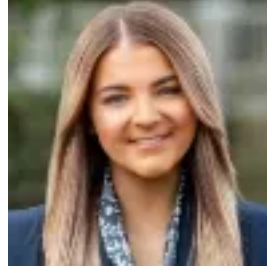
Bathrooms: 2

Parkings: 2

Type: House



Chris Watson
0398798827



Olivia Mackie
0398798827

\$1,200,000 - \$1,280,000

THE PROPERTY Situated in a prime location nearby of Eastland's renowned shopping and dining precinct resides this bespoke four-bedroom townhouse culminating in a celebration of style, space and a low maintenance lifestyle with abundance at your fingertips. Boasting immediate curbside appeal and enviable street frontage, this double level residence warmly welcomes with a bright and airy formal entryway flanked by a large family room enhanced by panoramic front yard views. Championing a versatile open plan design, the central living and dining domain features a sleek galley style stone kitchen flaunting tiled and glass splashbacks, 900mm electric oven, gas cooktop, soft close cabinetry and an integrated dishwasher allowing for seamless casual and formal dining, while glass sliding doors reveal an entertainer's alfresco complete with outside gas fireplace, ideal for enjoyment in every season. Privately positioned on the ground floor, the main bedroom features a walk-in robe and luxe ensuite, while upstairs three robed bedrooms share the fully tiled family bathroom and enjoy a versatile upstairs rumpus, perfect for growing families. Further adding to the appeal, a dedicated laundry with a chute from upstairs, solar-assisted hot water, ducted vacuum and a six-star energy rating.

THE FEATURES- Stunning four-bedroom, two-bathroom family retreat- Ground-floor main bedroom flaunts WIR & sparkling ensuite - Three first-floor bedrooms all feature built-in robes- Family bathroom with freestanding bath, vanity & shower - Entertainer's alfresco enhanced by outside gas fireplace- Ducted heating, evaporative cooling & split system - Double glazed sliding doors & downstairs windows on rear of house- Remote double garage with internal & rear access

THE LOCATION Ideally situated just a short stroll to the vibrant Ringwood town centre, train station and Eastland, a pleasant walk to Jubilee Park and Ringwood Lake, close to Eastlink, and within easy reach of an array of schools including Great Ryrie Primary, Aquinas College, Ringwood Secondary College and Tintern Grammar.