

**1/26 Rosedale Crescent, Ringwood East, Vic 3135**



**Sold Unit**

Saturday, 11 May 2024

1/26 Rosedale Crescent, Ringwood East, Vic 3135

**Bedrooms: 2**

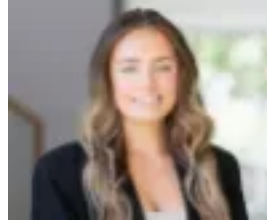
**Bathrooms: 1**

**Parkings: 1**

**Type: Unit**



Louise Carrigg  
0414827652



Ella Rait  
0424669181

## Contact agent

Nestled in nature with placement beside Ringwood Lake Park, this beautifully maintained unit offers a tranquil environment for astute investors, first homebuyers or downsizers searching for a lifestyle of peace, comfort and complete convenience. Resting at the end of a quiet cul-de-sac, the home enjoys a single level design with the large lounge room relishing large windows and plenty of space to relax with family members or friends. A generous dining area then connects through to the kitchen that's presented in pristine condition and includes double sinks, a breakfast bench plus an upright Westinghouse oven/gas stove. Leading out from the laundry, a tranquil courtyard oasis awaits and offers space to potter in the garden or sit outside and relish the scenic treed outlook. Adding yet further appeal, the unit includes two good-sized bedrooms, each with built-in-ropes and serviced by a spotless family bathroom and separate toilet. Comfortably appointed with ducted heating and complemented by a single garage and adjacent single carport space for visitors. Perfectly placed to enjoy daily strolls around the lake, walking distance to Eastwood Primary, Ringwood Secondary, Tintern Grammar, Aquinas College, Eastland Shopping Centre and Ringwood Station, near Costco, Aquanation, Jubilee Park and EastLink.