

1/27 Orlando Drive, Holmview, Qld 4207



House For Sale

Wednesday, 15 May 2024

1/27 Orlando Drive, Holmview, Qld 4207

Bedrooms: 3

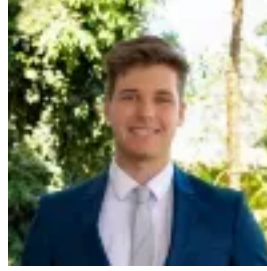
Bathrooms: 2

Parkings: 2

Type: House



SELENE BRUYNZEELS
0738076334



ADAM JONES
0738076334

CONTACT AGENT

Welcome to 1/27 Orlando Drive, Holmview! This well-maintained home boasts three spacious bedrooms with new carpets, ensuring comfort for the whole family. You'll find two neat bathrooms, high ceilings to main living areas, and a fresh coat of paint throughout giving the home a modern touch. Situated in a peaceful area, it offers a quiet retreat from city life while still being close to parks, shops, and schools. Don't pass up the chance to make this fantastic home your own!

FAST FACTS:

- 3 x Bedrooms.
- 2 x Bathrooms.
- Single Car Garage - Additional car space via side access.
- HIGH CEILINGS!
- Interior recently painted in Lexicon Half, to add that modern touch.
- 309m² Block Size (Approx).

INSIDE FEATURES:

- All bedrooms feature NEW carpets, and are fitted with built-in wardrobes and ceiling fans.
- The master bedroom features high ceilings and has its own spacious ensuite - featuring a LARGE shower!
- Master bedroom also comes equipped with air-conditioning, and has convenient outdoor access via a sliding glass door.
- Relax in the SPACIOUS main bathroom, complete with a bathtub.
- Find laundry facilities conveniently tucked away in a cupboard.
- Experience seamless living in the open-plan kitchen, living, and dining area, featuring high ceilings!
- Additionally, you'll find that the living area is flooded with natural light and comes equipped with air-conditioning and a ceiling fan.
- The kitchen showcases a 4-burner gas cooktop and plenty of bench-top and cabinet space.
- Outdoor access to the alfresco area via glass sliding doors.

OUTDOOR FEATURES:

- Enjoy outdoor gatherings year-round with the undercover back alfresco, perfect for entertaining in any weather!
- Benefit from an additional car space on the side of your property via a gate, featuring a concrete driveway with added convenience to store a vehicle, boat or motorbike.
- Beautiful and easy-to-maintain gardens.
- Find a generously sized storage shed.
- Enjoy a leisurely walk to the nearby park, just a short distance away, for outdoor fun.

LOCATIONS NEARBY:

- Canterbury College - 3.8km
- Bethania Lutheran Primary School - 5.1km
- Bunnings Bethania - 3.9km
- Holmview Central Shopping Centre - 2.5km
- Orlando Park - 100m
- Gold Coast - Roughly 40mins
- Brisbane CBD - Roughly 30mins

ADDITIONAL INFORMATION:

- Body Corp: Approx. \$2,450.00 / year
- Rental Appraisal: \$520.00 - \$550.00 / week

Don't miss the chance to make this property your own. Book an inspection today and experience the perfect blend of comfort, functionality, and charm. Contact Selene or Adam for more information.

-Disclaimer: All information contained herewith, including but not limited to the general property description, price and the address, is provided to Ray White Beenleigh by third parties. We have obtained this information from sources we believe to be reliable; however, we cannot guarantee its accuracy. The information contained herewith should not be relied upon and you should make your own enquiries and seek advice in respect of this property or any property on this website.