

**1/29 Hilda Street, Glenroy, Vic 3046**



**Sold House**

Wednesday, 3 April 2024

1/29 Hilda Street, Glenroy, Vic 3046

**Bedrooms: 3**

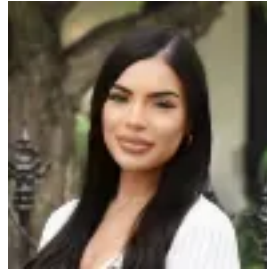
**Bathrooms: 2**

**Parkings: 2**

**Type: House**



Arjun Chandaka  
0393002211



Stephane Bootlis  
0406806431

**\$673,000**

The luxuries of Caesarstone, elevated ceilings and manicured gardens are a taste of this quality built, street front home in a superb pocket of Glenroy surrounded by reserves. From the open plan living area and extension dining space, onto the modern galley style kitchen with all the mod cons and leading you through to the private and manicured rear garden for outdoor sunshine and alfresco dining. The ground floor Master bedroom with huge WIR and ensuite is perfect for parents or live in elderly parents, and upstairs the two generous bedrooms share the central bathroom. Nestled between the options of Glenroy and Gowrie Station, Northern Golf Club, West St cafes and major arterial roads, you're in a five star location for convenience. Highlights- Approximately 224sqm property- Fantastic rental returns available for investors- Holland blinds, ducted heating and reverse split systems throughout- Spacious open plan living area and a dining space extension- Contemporary kitchen featuring Caesarstone countertops, gas cooking, s/s dishwasher and oven and good storage- Master bedroom with WIR, private ensuite and reverse cycles unit- Two generous bedrooms upstairs with mirrored BIRs and reverse cycle units- Modern central bathroom upstairs between rooms- Dual patio areas in the low maintenance landscaped yard with WT- Internal laundry- Double garage accessible via rear yard and plenty off street parking- Convenient to local parks, reserves, sports and golf club- Close to Glenroy & Gowrie Stations and West St Glenroy shopping 7mins from Broadmeadows Central and 20mins from Highpoint Shopping Centre- Within the school catchment zones for Glenroy Central & Belle Vue Park Primary School, Pascoe Vale Girls Secondary College, Glenroy Secondary College and many formidable private schools- Direct access approx. 30mins to Melbourne CBD via M2/Pascoe Vale Rd and approx. 15mins to Tullamarine Airport All information about this property has been provided to Ray White by third parties. Ray White has not verified the information and does not warrant its accuracy or completeness. Parties should make and rely on their own enquiries in relation to this property.