

1/29 Kelly Street, Diamond Creek, Vic 3089

Unit For Sale

Monday, 22 April 2024

1/29 Kelly Street, Diamond Creek, Vic 3089

Bedrooms: 3

Bathrooms: 1

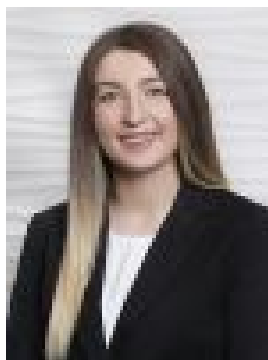
Parkings: 2

Area: 381 m2

Type: Unit



Luke El Moussalli
0403465560



Emma Costick
0430203662

ESR: \$700,000 - \$750,000

Expressions of Interest Offers Close Tuesday 14th of May at 5.00pm (unless sold prior)Renovated to a high standard, this freestanding single-level villa, a breezy walk from the centre of town, exudes warmth and modern appeal. Designed to maximise space and minimalise maintenance, the living and dining room are streamed in light and feature timber floors and a soft neutral colour palette, complemented by a sleek new kitchen featuring a beautiful timber breakfast bar, premium Smeg appliances, finger tile splashback and excellent storage options.Zoned for privacy, discover three robed bedrooms serviced by a contemporary main bathroom finished with a freestanding bathtub, a rain shower and separate toilet. French doors lead outside to a private courtyard - offering the ideal place to enjoy a meal in the sunshine, or spend quality time with family and friends.Amongst the highlights are Baltic pine floors, new ducted heating & evaporative cooling, freshly repainted interior exterior, a garden shed/workshop and a tandem carport. The location is fantastic, walking distance from Phipps Crescent Reserve, Diamond Creek East Primary School and Diamond Valley College, bus and train services, and a short distance from Wattle Glen Village, St Helena Marketplace, Greensborough Bypass and M80 Ring Road.***PHOTO ID REQUIRED AT OPEN FOR INSPECTIONS***