

# 1-3/5 Pearce Street, Shepparton, Vic 3630

## Sold Unit

Thursday, 14 December 2023

1-3/5 Pearce Street, Shepparton, Vic 3630

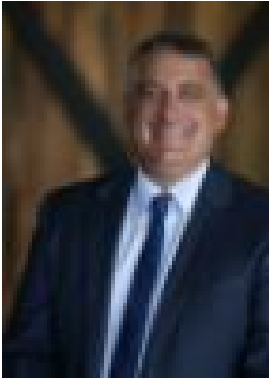
Bedrooms: 5

Bathrooms: 3

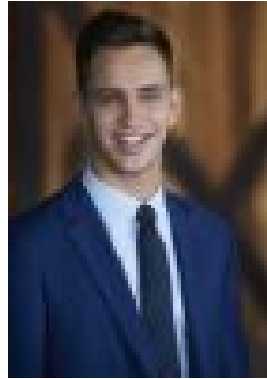
Parkings: 4

Area: 602 m2

Type: Unit



Rocky Gagliardi  
0358311800



Adam McCurdy  
0358311800

## Contact agent

Located near Woolworths, Archer Street Shopping Centre, Shepparton CBD & Victory Park stands the unique opportunity for investors to secure this blue-chip investment for the guaranteed growth in years to come! The front unit has 1 bedroom whilst the following 2 both have 2 bedrooms, all with BIR's, formal kitchen/meals space, functional bathrooms, car spaces and all in great condition. Rents are as followed; 1. Unit 1 = \$290 per week (appraised rent) 2. Unit 2 = \$300 per week 3. Unit 3 = \$300 per week It could achieve \$46,280 per annum with terrific upside with rent renewals for units 2 & 3!