

1-3/9 Poplar Crescent, Bellfield, Vic 3081



Sold House

Sunday, 13 August 2023

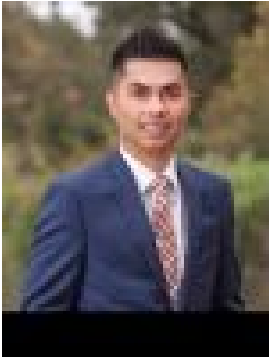
1-3/9 Poplar Crescent, Bellfield, Vic 3081

Bedrooms: 4

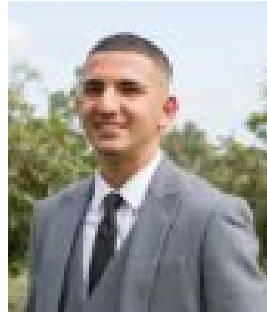
Bathrooms: 3

Parkings: 2

Type: House



Keb Nguyen
0434532137



Massimo Barbanera
0394622922

\$695,000

The saying "good things come to those who wait" rings true with this brand new boutique luxury home in the prestigious Bellfield Estate. This sleek executive residence, with its own street frontage, will offer an elevated standard of living and allow you to experience an elite executive lifestyle within easy walking distance of the Darebin Creek Trail, Cyril Cummins Reserve, Ford Park Playground, Bell Street buses and Bell Street Mall and moments from Northland Shopping Centre, Ivanhoe Plaza, excellent schools, trendy cafes, Heidelberg train station, La Trobe University and the Heidelberg medical precinct. Designed with an eye of style, a focus on quality and beautifully balanced décor, the residence boasts superior finishes, an entertainer's kitchen with stone benchtops and ILVE appliances, chic open-plan living, relaxed outdoor entertaining, luxurious fully-tiled bathrooms, an abundance of natural light and so much more. 116.5sqm (approx.), two bedrooms upstairs, two bathrooms, single garage. Two neighbouring townhouses also available: Townhouse 1: SOLD \$1,080,000 Townhouse 2: 116.5sqm (approx.), two bedrooms upstairs, two bathrooms, single garage. Townhouse 3: 141.1sqm (approx.): four bedrooms (guest bedroom downstairs), two bathrooms, single garage.