

# 1/3 Letitia Street, Oatley, NSW 2223

## Sold Unit

Friday, 8 March 2024

1/3 Letitia Street, Oatley, NSW 2223

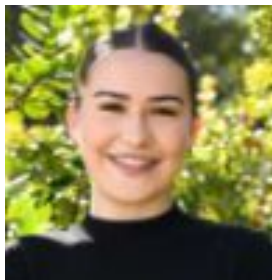
Bedrooms: 2

Bathrooms: 1

Parkings: 1

Area: 62 m2

Type: Unit



Sophia Roy  
0455133353



Jack Huggett  
0422690929

**\$870,000**

Discover a rare gem nestled in the heart of Oatley, a spacious ground floor unit that epitomises refined living, catering effortlessly to downsizers, couples, and astute investors alike. This inviting residence features two generous sized bedrooms boasting built-in robes and ceiling fans. The sunlit open plan living and dining area seamlessly connects to a warm sunny balcony, offering private and easy access for your relaxation and enjoyment. Situated within a meticulously maintained security complex, this residence comes complete with a single lock-up garage, ensuring both security and convenience. Embrace the effortless lifestyle afforded by this prime location within walking distance to Oatley's array of amenities, including shops, schools, transport options, and dining establishments. Awaken the possibilities and contact Jack Huggett on 0422 690 929