

**1-3 Moira Crescent, St Marys, NSW 2760**



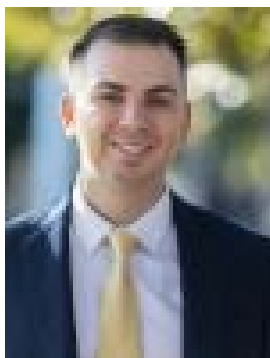
**Sold Residential Land**

Sunday, 8 October 2023

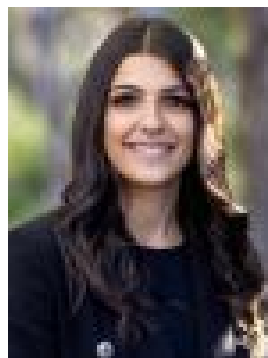
1-3 Moira Crescent, St Marys, NSW 2760

Area: 1525 m2

Type: Residential Land



Peter Diamantidis  
0296234033



Amber Boumelhem  
0296234033

**\$2,750,000**

We are pleased to present 1-3 Moira Crescent, St Marys brought to you by award winning agent Peter Diamantidis. Exceptional opportunity to acquire this DA approved 89 place childcare development site, with construction certificate been granted and council contributions already paid. The houses have been demolished ready for the experienced builder, developer or owner operator to capitalise on this unique offering. **READY TO BUILD!** Located in prime location, this land is situated within close proximity to local schools, Queen Street shops, St Marys Train Station, St Marys Village, bus stops and even the future airport metro! • DA Approved for 89 kids childcare centre • Site area 1,525sqm • Corner block • Two wide frontages of 39.63m & 27.435m • Council Contributions, all consultant fees have been paid All offers would be considered prior to auction! For further information, please contact Peter Diamantidis 0404 051 702 or Amber Boumelhem 0452 669 516. Disclaimer: The above information has been gathered from sources that we believe are reliable. However, we cannot guarantee the accuracy of this information and nor do we accept responsibility for its accuracy. Any interested parties should rely on their own enquiries and judgment to determine the accuracy of this information for their own purposes. Images are for illustrative and design purposes only and do not represent the final product or finishes.