

# 1 & 3 Railway Terrace, Beachport, SA 5280

GIORDANO  
& PARTNERS

## Sold House

Wednesday, 6 December 2023

1 & 3 Railway Terrace, Beachport, SA 5280

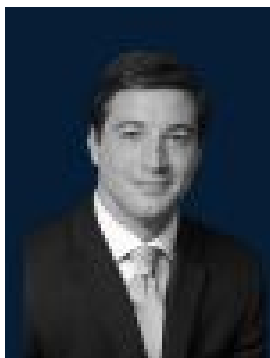
Bedrooms: 15

Bathrooms: 9

Parkings: 12

Area: 2429 m2

Type: House



Grant Giordano  
0475770035



Jacqui Ilicic  
0400144897

**\$3,450,000**

Prominently sited above the glistening aquamarine foreshore and pristine sandy beaches of the ever-popular tourist destination of Beachport, is this thriving boutique accommodation and restaurant/private function business that is both ideally situated and well-established. The highly visible accommodation business, Bonnies, offers 6 modern, luxury apartments comprising open-plan living/kitchen, 2 bedrooms, 1 bathroom and 1 private parking space. All rooms enjoy a private terrace with stunning views of the beaches and Rivoli Bay. Magnificent, serene ocean views are permitted via walls of floor-to-ceiling glass from each hotel suite, creating an idyllic and sought after beach holiday attraction. Fireplaces, TVs, trendy pendant lighting, air conditioning, laundry facilities, fully equipped kitchens with designer mirrored splashbacks including oven, cooktop, dishwasher and coffee machines are all included for the discerning coastal guests. Also on offer is 'Bonnies of Beachport', a renowned cafe, restaurant, hotel and function space that has been operating in some form since 1876. Currently configured with a cafe, function room and dining space plus 7 hotel rooms, this iconic seaside locale attracts tourists and local holidaymakers alike. Both businesses are to be sold free-hold, on two titles amounting to approx. 2,429 sqm and free-hold with valuable inclusions such as a fully operational commercial grade kitchen and the fully furnished luxury apartments. There is tremendous scope to further enhance Bonnies and Bompas or simply plug and play as the next astute investor. Beyond the valuable commercial infrastructure is the rapidly growing tourist haven of Beachport. Highlights of this picturesque township include views of the iconic jetty whilst also being in close proximity to the famous Limestone Coast wine region, Beachport Golf Club, Conservation Park, Lake George, tennis courts, pristine coastline, lagoons, boat ramp ideal for aquatic pursuits and fishing. The delights of Robe and Mt Gambier are also within driving distance enabling for pleasant day trips allowing guests to return to stay by the coast at paradisaal Beachport. For those seeking a complimentary business venture decades in the making on an irreplaceable beachside land holding, or for those seeking lifestyle change coupled with financial security, 1 & 3 Railway Terrace in sunny Beachport awaits.