

1/30 BURDOO DRIVE, Grovedale, Vic 3216

Unit For Rent

Friday, 19 April 2024

1/30 BURDOO DRIVE, Grovedale, Vic 3216

Bedrooms: 2

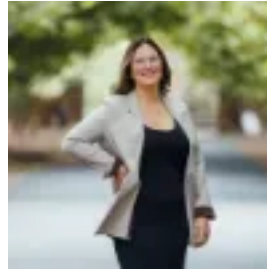
Bathrooms: 1

Parkings: 1

Type: Unit



Jacqui Allen
0499413364



Sophie Anapliotis
0448273353

\$410 per week

Within a short distance to Waurm Ponds Shopping Centre, local Schools, Deakin University as well as walking and bike trails and Leisurelink Aquatic Centre, this unit is a perfect fit for someone looking for location and comfort. To top it all off, the Surf Coast Highway keeps you connected to both Geelong and the region's stunning beaches. Features include: - Two bedrooms with built in robes- Open plan living and dining- Kitchen with plenty of space and electric cooking- Split-system heating & cooling- Central bathroom with separate bath & WC- Single lock up garage- Private low-maintenance courtyard

Inspections are available by registration. To register your interest and to inspect and apply, reach out to us via the contact form and your property manager will be in touch.