

# 1/31 Tallebudgera Creek Road, Burleigh Heads, Qld 4220



## House For Rent

Thursday, 13 June 2024

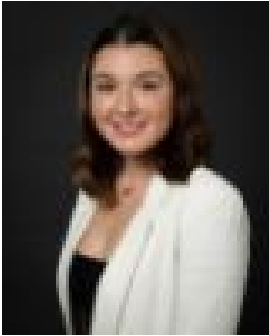
1/31 Tallebudgera Creek Road, Burleigh Heads, Qld 4220

**Bedrooms: 3**

**Bathrooms: 2**

**Parkings: 2**

**Type: House**



Charlotte Mahu  
0481466688



Lisa Mahu  
0449827734

**\$900**

This townhouse is centrally located in great location within easy access to trendy cafes and restaurants. With a lazy stroll, you will arrive to the iconic Tallebudgera Creek meanwhile a short drive will allow you access to the Gold Coast's most sought-after holiday and recreational destinations. Travelling to the East gives you access to the all of the pristine beaches, Burleigh Heads National Park and numerous shopping destinations. To West, there is Tallebudgera Valley and Springbrook National Park. Wanting to travel North and South of the Gold Coast, the M1 motorway is at your fingertips with on and off ramps not far away. Offering; Ground Level\* Lounge with air conditioning unit to keep you cool\* Dining\* Kitchen with new dishwasher\* Powder Room\* Double Lock Up Garage\* CCTV system\* Private courtyardUpper Level\* 3 good size bedrooms with built ins\* Ensuite and main bathroom\* Split system air conditioning throughout and ceiling fans to each bedroom5kw Solar inverter (3.5kw panels installed with capacity for 6kw) Distances:• Burleigh Town: Immediately outside of your doorstep• Martin Sheils Park: 200m• Bus stop 756: 220m• Petrol Station: 340m• Tallebudgera Creek: 250m• Burleigh Town Hotel: 500m• Stocklands Shopping Centre: 1.6km• Burleigh Heads State School• Burleigh Heads Beach: 3.5km• Burleigh Heads National Park: 4.0km• Pacific Fair Shopping Centre: 10km• Broadbeach: 10.5km• Star Casino: 10.5km• Gold Coast Airport: 13km\*Distances are approximateFor inspection, please contact Charlotte Mahu on 0410 884 112 or rentals@bellemaisonrealty.com.au