

1/32 Curtin Street, Maidstone, Vic 3012



Townhouse For Sale

Tuesday, 2 April 2024

1/32 Curtin Street, Maidstone, Vic 3012

Bedrooms: 2

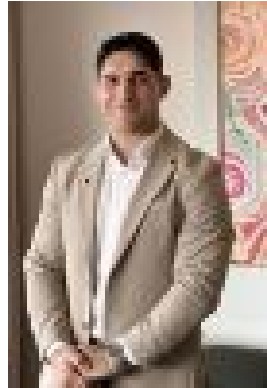
Bathrooms: 1

Parkings: 1

Type: Townhouse



John Luong
0383987800



Max Marcialis
0422649411

\$600,000 - \$660,000

Offering modern style and easy, low-maintenance living, this beautifully presented two-bedroom townhouse presents an outstanding opportunity for home buyers and investors alike. Chic interiors are complemented by a private courtyard ideal for alfresco dining and entertaining, while the superb parkside location promises plenty of room to move and is sure to appeal to young families. -?open-plan kitchen/meals/living showcasing a beautifully appointed kitchen with pendant-lit island bench and stainless steel appliances-?two bedrooms, one with a walk-in robe and one with a full-width built-in robe-?centrally positioned bathroom with elegant floor-to-ceiling tiling-?walk-in laundry + guest toilet-?split-system heating and cooling-?under-stair storage-?quality floor treatments throughout, including hardwood timber floorboards-?paved, wraparound entertaining courtyard fringed by established bamboo hedging for privacy and ambiance-?off-street parking-?superb location from which to enjoy the Inner West lifestyle. Stroll to your choice of popular cafes for your morning coffee, including One For The Crow a two-minute walk from home and West Footscray's much-loved Brother Nancy. Dobson Reserve is just across the street offering wide open space and a great playground sure to delight young families. Proximity to Medway Golf Club and Footscray Park adds extra lifestyle appeal, while the easy walk to Central West Shopping Centre promises enviable convenience, placing vibrant shopping and a choice of supermarkets at your fingertips -?sought-after school zone - walk to Footscray West Primary School and drive to Maribyrnong College in six minutes-?only 10.8km from the CBD with easy access to public transport - bus stops within strolling distance and Tottenham Station nearby