

1/37 Ledger Road, Beverley, SA 5009



House For Sale

Wednesday, 17 April 2024

1/37 Ledger Road, Beverley, SA 5009

Bedrooms: 3

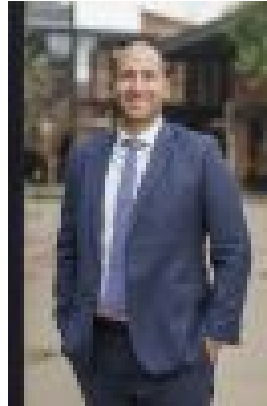
Bathrooms: 2

Parkings: 1

Type: House



Peter Kiritsis



Alex Ghinis
0455386102

\$779,000 - \$799,000

Upcoming Open Inspections // Thursday 18th April 5:30pm - 6:00pm // Saturday 20th April 10:00am - 10:30am // Tuesday 23 April 5:00pm - 5:30pm

Welcoming you home into a brand-new abode that not only captivates you with its striking appearance but also delivering a lifestyle to match. An offering sure to draw plenty of interest, giving you the freedom to lock up and explore the city, Port, and coast at your leisure. Featuring your own secure lockup garage and separate driveway, this street-fronted home offers everything you need and more. With high-quality flooring, LED downlights, a cozy and inviting atmosphere, and a practical floor plan, this property is perfect for busy families, young couples, or downsizers looking for their ideal home. Your first step inside takes a solitary turn to the master bedroom coveting a walk-in robe and ensuite. Next, bedrooms two and three treat the younger crowd or guests to plush carpets and mirrored robes. For dinner, socialising, and relaxing, the open plan finale responds ahead of the kitchen with stainless appliances and an eyes-all-zones serving island; and for those with minimal gardening interest, this low maintenance, fully fenced abode is finished with a tiled alfresco. Conveniently located near reserves, Woodville South Oval, Nazareth Catholic College, and just a short stroll to First Things First for your morning coffee fix. With easy access to Port Road for city-bound transit, this property offers both a comfortable lifestyle and an attractive rental opportunity. Embrace the west and make it your own. There's more to love:

- 3 bedrooms | 2 bathrooms
- Main Bedroom With Fully Tiled Ensuite & WIR
- Bedrooms 2 & 3 with BIR's
- Light-filled living areas
- Fully tiled main bathroom with bath
- Single garage + off-street parking
- Secure internal garage entry
- 2.7m Ceilings
- Quality s/s appliances to kitchen
- Carefree courtyard entertaining
- Low care landscaped frontage
- Ducted R/C A/C
- Crisp LED downlighting
- Zoning for Woodville Primary School & Findon High School
- A pivot to buses, the QEH, Welland Plaza & St. Michael's College Primary Campus
- And More...

*Window treatments are not included. *Measurements are approximate. *We make no representation or warranty as to the accuracy, reliability or completeness of the information relating to the property. Some information has been obtained from third parties and has not been independently verified.