

**1/4 Peewee Place, Burleigh Waters, Qld 4220**



**Sold Townhouse**

Tuesday, 26 March 2024

1/4 Peewee Place, Burleigh Waters, Qld 4220

**Bedrooms: 3**

**Bathrooms: 1**

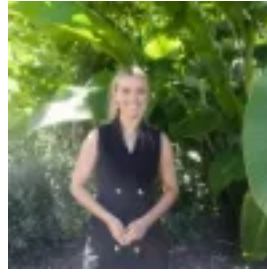
**Parkings: 2**

**Area: 155 m2**

**Type: Townhouse**



Lee McFarlane  
0755531100



Laura Hardwick  
0432324538

**\$1,120,000**

Unveil the pinnacle of contemporary living within this captivating three-bedroom townhouse, ensconced in a tranquil cul-de-sac. Tucked away in the vibrant heart of Burleigh Waters, mere moments from the sun-kissed shores, this property epitomizes coastal living at its finest. Enter a realm of seamless indulgence, where the lower level welcomes you with open arms, boasting a harmonious fusion of living, dining, and culinary spaces. Ascend to the upper echelons of luxury, where three resplendent bedrooms await, adorned with lavish appointments and bathed in natural light. Step foot into the living area, where coastal opulence reigns supreme. Hybrid laminate floors in a palette of light wood hues dance beneath your feet, harmonizing flawlessly with the crisp white walls and floor-to-ceiling curtains, each detail meticulously crafted to perfection. The living area is also equipped with a with split system for year-round comfort. The kitchen stands as the epitome of sophistication, adorned with white granite countertops, stainless steel appliances, and a timeless marriage of warm wood tones and pristine white cabinetry. From here, your gaze extends to the dining area, where panoramic views of the backyard invite you to bask in the joy of watching your children frolic in the sunshine. Transforming the garage into a versatile haven, this multipurpose room awaits your creative vision, while the laundry exudes an aura of elegance with its white cabinets, marble countertops, and gleaming gold fittings, complete with a discreet toilet for the utmost convenience of your guests. Each bedroom envelops you in comfort, equipped with a split system and ceiling fan to ensure year-round bliss, while sumptuous new carpeting pampers your senses at every step. The main bathroom is a masterpiece in itself, featuring stunning high-quality Beaumont tiles and luxurious ABI gold fittings. Complete with a floating vanity, large bathtub, shower, and toilet. Outside, the alfresco oasis beckons, boasting an outdoor kitchen, a handy garden shed, and expanses of lush greenery, providing the perfect backdrop for unforgettable gatherings and cherished moments. Embrace a life of effortless sophistication - your dream home awaits in this idyllic sanctuary of serenity. Additional information: - Townhouse in boutique block of three- No body corp - only shared insurance- Three-bedroom with additional multipurpose room- Separate toilet downstairs off the laundry- 3 x 3m Garden shed Nestled in the vibrant heart of Burleigh, this prime location is just a stone's throw away from Burleigh Beach, a mere 1.9km distance, which translates to a leisurely 7-minute bike ride or a scenic 29-minute stroll. Conveniently situated within easy driving reach of Caningeraba State School, Burleigh Sports Ground, Bond University, and a myriad of trendy local eateries and cafes including the renowned Paddock Bakery and Light years, ensuring every amenity and attraction is within your grasp. AUCTION DISCLAIMER This property is being sold by auction or without a price and therefore a price guide cannot be provided. The website may have filtered the property into a price bracket for website functionality purposes. We have in preparing this information used our best endeavours to ensure that the information contained herein is true and accurate, but accept no responsibility and disclaim all liability in respect of any errors, omissions, inaccuracies or misstatements that may occur. Prospective purchasers should make their own enquiries to verify the information contained herein. \* denotes approximate measurements