

1/4 Wedge Crescent, Rowville, Vic 3178



Sold Unit

Wednesday, 4 October 2023

1/4 Wedge Crescent, Rowville, Vic 3178

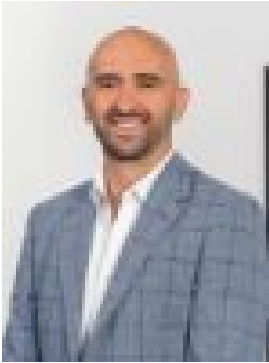
Bedrooms: 3

Bathrooms: 1

Parkings: 1

Area: 330 m2

Type: Unit



Michael Hill
0387206333



Jessica Maher
0387206333

\$680,000

In a peaceful pocket of Rowville sits the ideal low-maintenance property for first-home buyers, downsizers, or those looking to add to their investment portfolios. One of two on the block, the fabulous find boasts a well-zoned floorplan across a prized single level. Upon entry, you're greeted by a generous, light-filled living room, and this flows through to a sizeable kitchen-dining zone with quality appliances, including a dishwasher, an induction cooktop, and twin Bosch ovens; eye-catching engineered timber flooring creates a seamless fusion between the spaces. From here, there is direct access to the home's backyard, a secure area with grass and gardens, making it ideal for young children or pets. There is also a gate that allows access to a single garage for car parking or storage needs. Three bedrooms and a central bathroom, which are zoned together, complete the accommodation. The home features split system heating and cooling, a full-sized laundry, quality window coverings, and a location amongst a rich array of amenities. These include local buses, a range of schools such as Lysterfield and Park Ridge Primary, and Rowville Secondary College, a number of shopping precincts like Rowville Lakes and Stud Park, and the open green space of Hillside Park, Park Ridge Reserve, and Eildon Park. There is much to love about this single-level sensation, so inspect without delay to avoid disappointment. Noel Jones Real Estate has taken every precaution to ensure the information contained herein is true and accurate, however accept no responsibility and disclaim all liability in respect to any errors, omissions, inaccuracies, or misstatements that may occur. Prospective purchasers should make their own enquiries to verify the information contained herein.