

1/40 South Beach Promenade, South Fremantle, WA 6162

WHITE HOUSE
PROPERTY PARTNERS

Apartment For Rent

Friday, 19 April 2024

1/40 South Beach Promenade, South Fremantle, WA 6162

Bedrooms: 2

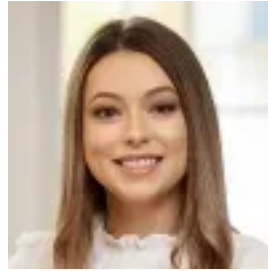
Bathrooms: 2

Parkings: 2

Type: Apartment



Monique Malarowski
0893192024



Veda Spence
0893192024

Under Application!

Superbly positioned in the heart of the South Beach Estate in South Fremantle — this secure, modern ground floor apartment speaks for itself. Less than 200 meters to South Beach, and the endless supply of iconic cafes, bars and restaurants along South Terrace — this apartment is all about location! The spacious open plan kitchen, living and dining area flows out onto a large private courtyard. The courtyard has ample space for entertaining and has it's own private access gate. The modern kitchen features a built in dishwasher, stainless steel oven, and plenty of storage. The well proportioned master suite features sliding glass doors out onto the front courtyard as well as built in wardrobes. The second bedroom includes 2 x built-in sleek bunks beds which the kids would love. Inclusions: - All white goods including dishwasher, dryer, washing machine and fridge/freezer- Olive trees in pots (outdoor)- Additional internal storage shelving negotiable- Bunk beds will remain in-situ along with the cubby house in the courtyard- Parking: Undercover and car bay (tandem)Exclusions: - The storeroom (outside the premises)- The outdoor umbrellas (seen in pictures)The property is available from now for a 12 month lease preferred. Sorry, pet's aren't considered. Applications accepted through the [Apply link](#).Disclaimer: White House Property Partners has taken every effort to ensure the accuracy of the information in this advertisement. However, we do not accept responsibility or liability for any errors, omissions, inaccuracies, or misstatements.