

1 / 410 Edgecliff Road, Woollahra, NSW 2025



House For Sale

Monday, 19 February 2024

1 / 410 Edgecliff Road, Woollahra, NSW 2025

Bedrooms: 3

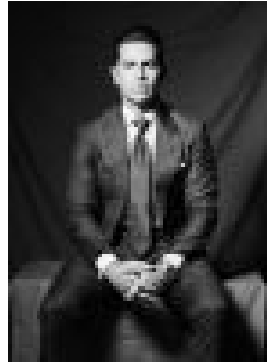
Bathrooms: 2

Parkings: 1

Type: House



Zakir Abdallaoui
0411955786



Maclay Longhurst
0283556783

Buyers guide \$2,700,000

Gracious grandeur and house-size proportions are the hallmarks of this classic apartment in Rosemont, a landmark Art Deco building set in the leafy environs of Woollahra's exclusive consular belt with a short walk to Queen Street village and Edgecliff shopping & train station. A cherished home held for 36 years, this rare offering showcases a perfect NE aspect, huge living room, elegant dining room and an alfresco terrace with space to entertain 20 or more guests. Ready for a modern makeover, the apartment has lift access, storeroom and parking. * Tightly-held Art Deco block of 11 apts* Large alfresco terrace, bay windows* Living room with classic Deco f'place* Dining room with original sliding doors* Entry hall, sunroom, large gas kitchen * 3 bedrooms: huge master with b/ins* Art Deco bathroom, separate toilet* 2nd bathroom/laundry, linen closet* 3m high ceilings and timber floors* Secure parking, storeroom and lift