

1/438 Cypress Terrace, Palm Beach, Qld 4221

Sold Duplex/Semi-detached

Thursday, 16 November 2023

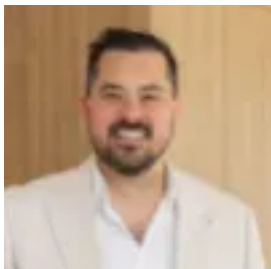
1/438 Cypress Terrace, Palm Beach, Qld 4221

Bedrooms: 3

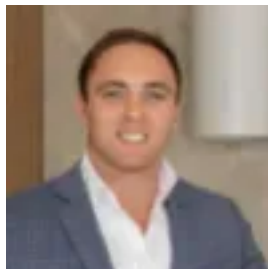
Bathrooms: 2

Parkings: 2

Type: Duplex/Semi-detached



Josh Willatt
0755340300



Tyler Clark
0755340300

\$1,140,000

Experience the epitome of laid-back Palm Beach living in this well-appointed townhouse just a short stroll to pristine Tallebudgera Creek or the beach. Spanning two spacious levels and featuring a choice of outdoor living areas, it's an ideal low-maintenance beachside escape within walking distance to cafes and shops. - Incredible North Palm Beach location with easy access to the surf or creek- Leave the car at home and walk to Tallebudgera Creek Park or local cafes- Versatile floorplan offers three generous bedrooms and two bathrooms- Bed 2 on the lower level flows out to a covered patio and easy-care yard- Relax with friends on the sun-drenched balcony with plantation shutters- Generous open-plan living and dining area features timber floorboards- Central kitchen offers Blanco dishwasher, stone benchtop, electric cooking- Large main bedroom with ensuite, lovely enclosed balcony with leafy views- NBN, carport plus lock-up garage with storage, fans throughout, 250L EHWS- Close to public transport, Murlong Park, PBSS and Espresso Moto Cafe- Strata insurance share \$1,712.48 per annum.- Rental Appraisal: \$950-\$1,000 per week.