

1/46 Gillard Street, Burwood, Vic 3125

HEAVYSIDE

House For Sale

Friday, 24 May 2024

1/46 Gillard Street, Burwood, Vic 3125

Bedrooms: 3

Bathrooms: 1

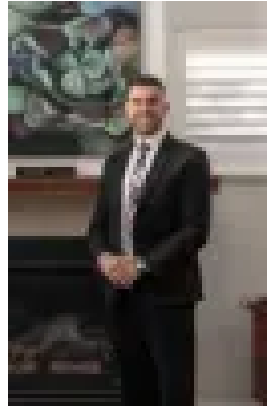
Parkings: 2

Area: 385 m2

Type: House



Wendy Zhou
0394703390



Steven Zervas
0394703390

\$870,000 - \$950,000

Watch the auction live here: <https://heavyside.co/live-auction/THE PROPERTY> Immaculately presented inside and out, on its own title with no owners corporation, this charming three-bedroom weatherboard home is perfectly poised for young families, downsizers and investors to secure a foothold in a sought-after position. Combining easy living with exceptional lifestyle convenience, this delightful home features a vibrant open plan living and dining zone upon entry complemented by stylish floorboards, which flows effortlessly through to the contemporary gourmet kitchen complete with wraparound benches, tiled splashbacks and quality stainless-steel appliances. Three bedrooms share the sparkling modern bathroom which includes shower, twin vanity and toilet, while a separate powder room is located at the rear off the enclosed porch. Additional value-add inclusions of a dedicated laundry, ducted heating, split system cooling, sun-splashed entertainer's patio and lock-up carport further increase the appeal, all perfectly positioned on an easy-to-manage garden block.

THE FEATURES

- Charming three-bedroom, one-bathroom weatherboard home
- Vibrant open plan living and dining domain upon entry
- Updated kitchen features stainless-steel appliances
- Three bedrooms complemented by timber floorboards
- Modern bathroom featuring shower, twin vanity & toilet
- Enclosed porch & sun-splashed entertainer's patio
- Large lock-up carport for peace of mind & convenience
- Ducted heating & split system cooling for optimum comfort
- Exciting potential to rebuild (STCA)

THE LOCATION

Enjoying an exceptional location within easy reach of every lifestyle amenity, close to Toorak Road trams and shopping precinct, Burwood Brickworks and the Gardiners Creek Trail, just a short stroll to Deakin University and close to a selection of well-regarded schools including Mount Scopus Memorial College, Presbyterian Ladies' College, Essex Heights Primary, Ashwood SC and Mount Waverly SC.

THE TERMS: 30|45|60